

## 3. 로드앤드

### 로드앤드

- 로드앤드는 견인 및 압착하중하에서의 어떠한 난운동에도 원활하게 동력을 전달하는 제어봉링크 장치를 제작할때 주로 사용됩니다.

### 볼조인트

- 링크 조절용 베어링으로서, 다양한 공업용 기계류 등의 로드링크 운동을 용이하게 해주기 위해 회전 및 요동운동을 합니다.

### 스터드 형 트랙 로울러

- 저속 및 중고속에서 정격하중 및 중하중에 적합한 베어링이다.

### 스페리컬 플레인

- 스페리컬 플레인인 특히 레이디언 중하중을 받는데 적합하여, 일반적으로 하우징 관련 축 조심이 불량한 곳이나 저속 미끄럼으로 기윤, 회전, 요동운동이 일어나는 곳에 사용합니다.



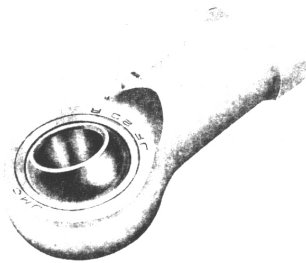
## ROD ENDS

급유형, mm치수, 암나사

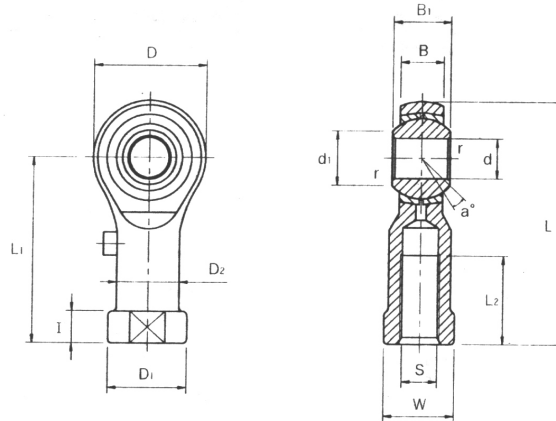
STEEL ON COMPOSITE MATERIAL

METRIC DIMENSION

FEMALE THREAD



JF



호칭번호 (Bearing No.)	질량 (Mass) gr.	주요치수 (Dimensions) mm														요동 각도 (Tilting angle) a°	볼 직경 (Spherical Diameter) mm	정부하용량 (Basic Static Load Ratings) Co/Kgf
		d	나사 (Threads) KS 2급/ S	D	B	B1	d1	L	I	L1	L2	W	D1	D2	r			
JF 5	16.5	5	M 5×0.8	16	6	8	7.7	35	4	27	14	9	11	9	0.5	13	11.1	570
JF 6	25	6	M 6×1	18.5	6.75	9	9	39.25	5	30	14	11	13	10	0.5	13	12.1	700
JF 8	43	8	M 8×1.25	23	9	12	10.4	49	6	37.5	17	14	16	12.5	0.5	13	15.87	1,000
JF 10	72	10	*M10×1.25 M10×1.5	27	10.5	14	12.9	58.5	8	45	21	17	19	15	0.5	13	19.05	1,350
JF 12	107	12	M12×1.75	31	12	16	15.8	67	7.5	51.5	24	19	22	17.5	0.5	13	22.5	1,700
JF 14	160	14	*M14×1.5 M14×2	34	13.5	19	16.9	75	9	58	27	22	25	20	0.5	15	25.4	2,100
JF 16	210	16	*M16×1.5 M16×2	38	15	21	19.3	84.5	9.5	65.5	33	24	27	22	0.5	15	28.5	2,550
JF 18	295	18	M18×1.5	43	16.5	23	21.7	93	10	71.5	36	27	31	25	0.5	15	31.6	3,000
JF 20	380	20	M20×1.5	46	18	25	23.8	101	11	78	40	30	34	27.5	0.5	15	34.5	3,500
JF 22	490	22	M22×1.5	52	20	28	25.8	110	12	84	43	32	37	30	0.5	15	38.1	4,200
JF 24	750	25	*M24×1.5	60	22	31	29.8	124	12	94	50	36	42	33.5	0.5	15	43	7,400
JF 25			*M24×2															
JF 25			M25×1.5															
JF 25			*M26×1.5															
JF 30	900	30	*M30×1.5 M30×2	73	21	32	34.4	145	16.5	108.5	50	47	49	40	0.5	15	47	9,100
JF 35	1,400	35	*M36×1.5 M36×2	82	23	35	39.8	173	17	132	60	49	58	48	0.5	15	53	11,400

주문안내 : 위표의 나사에 별표가 있는것은 주문시 나사치수를 명기해 주시기 바랍니다.

Please denote thread dimension in order sheet when you order star marked threaded rod ends in upper table.

▶ 註 JF30~JF35는 스페리칼 플레인을 끼워 넣으므로 중하중을 받을 수 있습니다.

JF30 and JF35 are suitable for the accommodation of heavy loads because they are supplied equipped with standard spherical plain bearings.

▶ 註 우나사는 "R"이고 백색 도금으로 되어 있습니다.

"R" represents the right thread of which the color of the body is white.  
좌나사는 "L"이고 황색 도금으로 되어 있습니다.

"L" represents the left thread of which the color of the body is yellow.

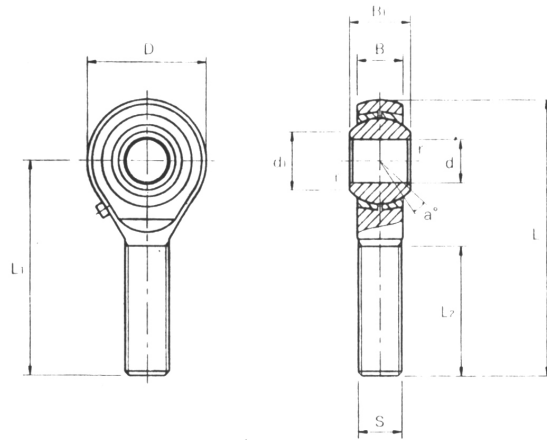
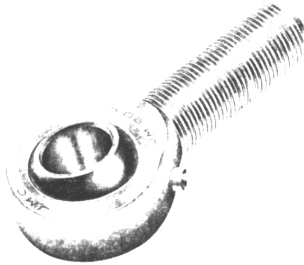
## ROD ENDS

급유형, mm치수, 슷나사

STEEL ON COMPOSITE MATERIAL

METRIC DIMENSION

MALE THREAD



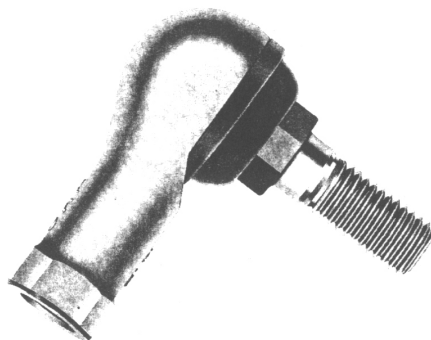
JM

호칭번호 (Bearing No.)	질량 (Mass) gr.	주요치수 (Dimensions) mm										요동 각도 (Tilting angle) a°	볼 직경 (Spherical Diameter) mm	정부하용량 (Basic Static Load Ratings) Co/Kgf
		d	나사 (Threads) KS 2급/ S	D	B	B <sub>1</sub>	d <sub>1</sub>	L	L <sub>1</sub>	L <sub>2</sub>	r			
<b>JM 5</b>	12.5	5	M 5×0.8	17	6	8	7.7	42	33.5	20	0.5	13	11.1	350
<b>JM 6</b>	19	6	M 6×1	18.5	6.8	9	9	46	36.75	22	0.5	13	12.7	500
<b>JM 8</b>	32	8	M 8×1.25	23	9	12	10.4	54	42.5	25	0.5	13	15.87	700
<b>JM 10</b>	54	10	M10×1.5	27	10.5	14	12.9	62	48.5	29	0.5	13	19.05	1,110
<b>JM 12</b>	85	12	M12×1.75	32	12	16	15.8	73	57	33	0.5	13	22.5	1,700
<b>JM 14</b>	126	14	M14×2	34	13.5	19	16.9	80	63	36	0.5	15	25.4	2,100
<b>JM 16</b>	185	16	M16×2	38	15	21	19.3	86.5	67.5	40	0.5	15	28.5	2,550
<b>JM 18</b>	260	18	M18×1.5	43	16.5	23	21.9	94.5	73	44	0.5	15	31.6	3,000
<b>JM 20</b>	340	20	M20×1.5	46	18	25	23.9	103	80	47	0.5	15	34.5	3,500
<b>JM 22</b>	435	22	M22×1.5	52	20	28	25.8	112	86	51	0.5	15	38.1	4,200
<b>JM 24</b>	650	25	M24×2	60	22	31	29.8	126	96	57	0.5	15	43	7,400
<b>JM 25</b>			M25×1.5											
<b>JM 30</b>	910	30	M30×2	72	21	32	34.4	147	111	66	0.5	15	47	9,100
<b>JM 35</b>	1,440	35	M36×2	82	23	35	39.8	175	134	80	0.5	15	53	11,400

▶ 註 JF30~JF35는 스페리칼 플레인을 끼워 넣으므로 중하중을 받을 수 있습니다.  
JF30 and JF35 are suitable for the accommodation of heavy loads because they are supplied equipped with standard spherical plain bearings.

▶ 註 우나사는 “R”이고 백색 도금으로 되어 있습니다.  
“R” represents the right thread of which the color of the body is white.  
좌나사는 “L”이고 황색 도금으로 되어 있습니다.  
“L” represents the left thread of which the color of the body is yellow.

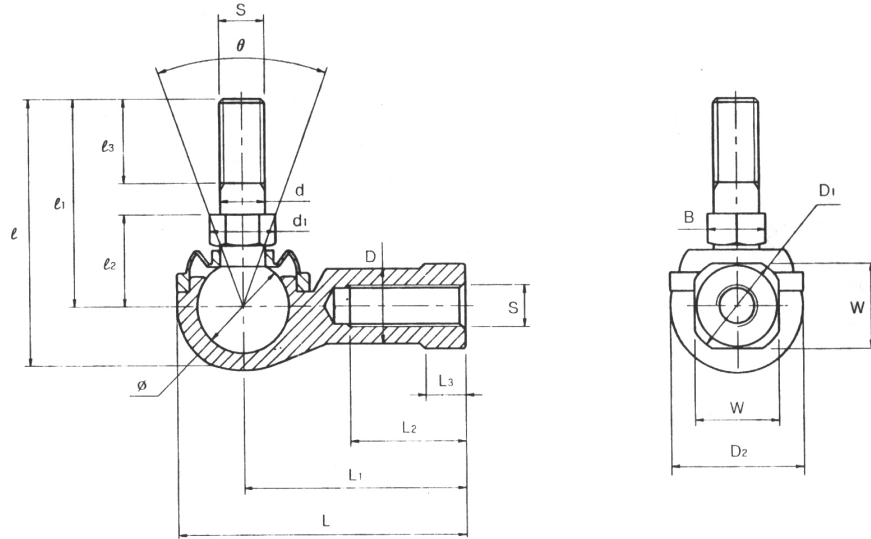
## BALL JOINTS



RBL

호칭번호 (Bearing No.)	중량 (Weigh) grf.	나 사 (Thread Size) S	주 요 치 수 (Dimensions) mm							
			D	L	L <sub>1</sub>	L <sub>2</sub>	L <sub>3</sub>	D <sub>1</sub>	W 0 -0.3	D <sub>2</sub>
<b>RBL 5</b>	24	M 5×0.8	9	35	27	14	4	11	9	16
<b>RBL 6</b>	37	M 6×1	10	40	30	14	5	13	11	19
<b>RBL 8</b>	67	M 8×1.25	12.5	49	36	17	5	16	14	23
<b>RBL 10</b>	110	M10×1.25	15	58	43	21	6.5	19	17	28
<b>RBL 10B</b>	113	M10×1.5								
<b>RBL 12</b>	165	M12×1.25	17.5	66	50	25	8	22	19	32
<b>RBL 12B</b>	170	M12×1.75								
<b>RBL 14</b>	255	M14×1.5	20	75	57	26	8	25	22	36
<b>RBL 14B</b>	260	M14×2								
<b>RBL 16</b>	335	M16×1.5	22	84	64	32	10	27	22	39
<b>RBL 18</b>	465	M18×1.5	25	93	71	34	11	31	27	44

## BALL JOINTS



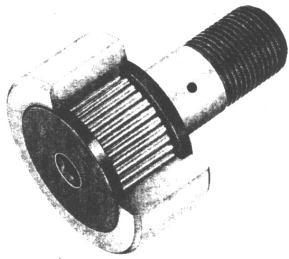
주요 치수 (Dimensions) mm								요동 각도 (Tilting angle) a°	항복점 강도 (Yield Strength) Pk/Kgf	정부하용량 (Basic Static Load Ratings) Co/Kgf
d	l	l <sub>1</sub>	l <sub>2</sub> ±0.3	l <sub>3</sub>	d <sub>1</sub>	B 0 -0.3	볼 직경 (Spherical Diameter) Φ/mm			
5	31.7	24.5	11.6	8	9	8	11.11	50°	230	940
6	35.5	27	11	11	9.2	8	12.7	50°	360	1,230
8	42.5	31	14	12	13.2	12	15.87	50°	670	1,950
10	48.5	38	17	17.5	15.4	14	19.05	50°	1,090	2,810
	53.5	42		21						
12	55	42	19	17	18.7	17	22.22	50°	1,670	3,820
	63	49		24						
14	73.5	58	23.5	22	21	19	25.4	50°	2,020	4,990
	79.5	64		28						
16	77	60	23.5	23	22	20	25.4	40°	2,740	4,990
18	90	68	26.5	25	24.5	22	28.57	40°	3,400	6,310

## STUD TYPE TRACK ROLLERS

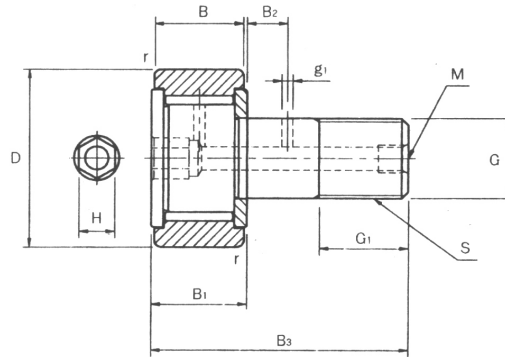
충진형, mm치수

FULL COMPLEMENT OF NEEDLE ROLLER

METRIC DIMENSION



CF...V



CF...V...

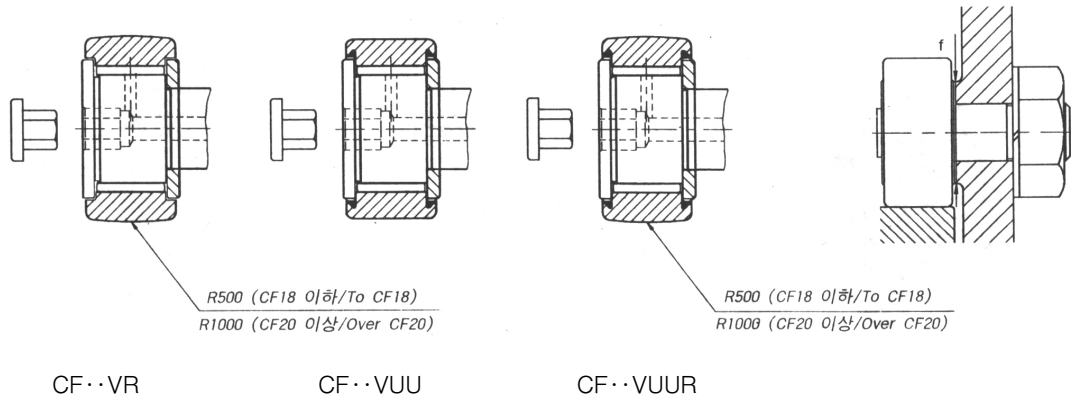
스텐드경 (Stud diameter) G mm	호 칭 번 호 (Bearing No.)				질량 (Mass)  gr.	주 요 치 수 (Dimensions) mm		
	씰 없음 (Unsealed)		씰 부착 (Sealed)			H	D	나 사 (Thread sizes) S
	원통외륜 (Cylindrical outer ring)	구면외륜 (Crowned outer ring)	원통외륜 (Cylindrical outer ring)	구면외륜 (Crowned outer ring)				
	CF···V	CF···VR	CF···VUU	CF···VUUR				
5	CF 5V	CF 5VR	CF 5VUU	CF 5VUUR	11	3	13	M 5×0.8
6	CF 6V	CF 6VR	CF 6VUU	CF 6VUUR	19	3	16	M 6×1
8	CF 8V	CF 8VR	CF 8VUU	CF 8VUUR	29	4	19	M 8×1.25
10	CF 10V	CF 10VR	CF 10VUU	CF 10VUUR	46	4	22	M10×1.25
	CF 10-1V	CF 10-1VR	CF 10-1VUU	CF 10-1VUUR	61		26	
12	CF 12V	CF 12VR	CF 12VUU	CF 12VUUR	97	6	30	M12×1.5
	CF 12-1V	CF 12-1VR	CF 12-1VUU	CF 12-1VUUR	107		32	
16	CF 16V	CF 16VR	CF 16VUU	CF 16VUUR	173	6	35	M16×1.5
18	CF 18V	CF 18VR	CF 18VUU	CF 18VUUR	255	8	40	M18×1.5
20	CF 20V	CF 20VR	CF 20VUU	CF 20VUUR	465	8	52	M20×1.5
	CF 20-1V	CF 20-1VR	CF 20-1VUU	CF 20-1VUUR	390		47	
24	CF 24V	CF 24VR	CF 24VUU	CF 24VUUR	820	8	62	M24×1.5
	CF 24-1V	CF 24-1VR	CF 24-1VUU	CF 24-1VUUR	1,140		72	
30	CF 30V	CF 30VR	CF 30VUU	CF 30VUUR	1,870	8	80	M30×1.5
	CF 30-1V	CF 30-1VR	CF 30-1VUU	CF 30-1VUUR	2,030		85	
	CF 30-2V	CF 30-2VR	CF 30-2VUU	CF 30-2VUUR	2,220		90	

## STUD TYPE TRACK ROLLERS

충진형, mm치수

FULL COMPLEMENT OF NEEDLE ROLLER

METRIC DIMENSION



주요 치수 (Dimensions) mm								설치치수 f 최소 (Minimum Clamping Diameter) mm	기본 동정격 하중 (Basic dynamic load ratings) C/kgf	기본 정정격 하중 (Basic static load ratings) C/kgf	허용 회전수 (Limiting speed) rpm
B	B1	B3	M	g <sub>1</sub>	G <sub>1</sub>	B <sub>2</sub>	r				
9	10	23			7.5		0.5	9.7	400	280	15,000
11	12	28			9		0.5	11	710	870	12,000
11	12	32			11		0.5	13	830	1,140	9,000
12	13	36			13		1	15	970	1,480	7,000
14	15	40	M6×1	3	14	6	1.5	20	1,370	2,010	6,000
18	19.5	52	M6×1	3	18	8	1.5	24	2,110	3,840	4,500
20	21.5	58	M6×1	3	20	10	1.5	26	2,580	5,240	3,500
24	25.5	66	M6×1	4	22	12	1.5	36	3,380	6,580	3,500
29	30.5	80	M6×1	4	25	12	1.5	40	4,750	9,390	3,000
35	37	100	M6×1	4	32	15	2	46	6,900	14,700	2,000

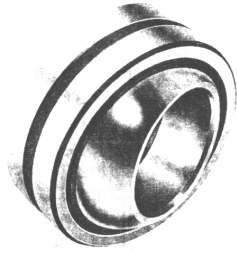
## SPHERICAL PLAINS

급유형, mm치수, 일반형

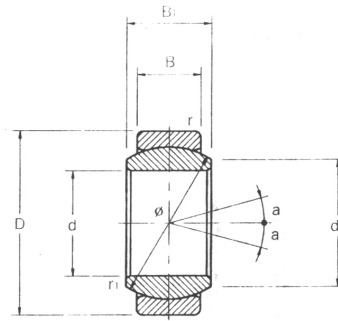
STEEL ON STEEL

METRIC DIMENSION

SEALED OR UNSEALED



GE



GE··E

호칭번호 (Bearing No.)		질량 (Mass) gr.	주요치수 (Dimensions) mm				
표준형 (Unsealed)	씰형 (Sealed)		d	D	B	B <sub>1</sub>	d <sub>1</sub>
GE 10E		12	10	19	6	9	13
GE 12E		17	12	22	7	10	15
GE 15ES	GE 15ES-2RS	32	15	26	9	12	18.4
GE 17ES	GE 17ES-2RS	49	17	30	10	14	20.7
GE 20ES	GE 20ES-2RS	65	20	35	12	16	24.2
GE 25ES	GE 25ES-2RS	115	25	42	16	20	29.3
GE 30ES	GE 30ES-2RS	160	30	47	18	22	34.2
GE 35ES	GE 35ES-2RS	258	35	55	20	25	39.8
GE 40ES	GE 40ES-2RS	315	40	62	22	28	45
GE 45ES	GE 45ES-2RS	413	45	68	25	32	50.8
GE 50ES	GE 50ES-2RS	560	50	75	28	35	56
GE 60ES	GE 60ES-2RS	1,100	60	90	36	44	66.8
GE 70ES	GE 70ES-2RS	1,540	70	105	40	49	77.9
GE 80ES	GE 80ES-2RS	2,290	80	120	45	55	89.4
GE 90ES	GE 90ES-2RS	2,820	90	130	50	60	98.1
GE 100ES	GE 100ES-2RS	4,430	100	150	55	70	109.5
GE 110ES	GE 110ES-2RS	4,940	110	160	55	70	121.2
GE 120ES	GE 120ES-2RS	8,120	120	180	70	85	135.6
GE 140ES	GE 140ES-2RS	11,400	140	210	70	90	155.9
GE 160ES	GE 160ES-2RS	14,400	160	230	80	105	170.2
GE 180ES	GE 180ES-2RS	18,900	180	260	80	105	199
GE 200ES	GE 200ES-2RS	28,100	200	290	100	130	213.5
GE 220ES	GE 220ES-2RS	36,100	220	320	100	135	239.5
GE 240ES	GE 240ES-2RS	40,400	240	340	100	140	265.3

▶註 현재 GE 70ES 까지 생산합니다.

GE series up to GE 70ES are now available.

• 문의 사항 : (주)수덕베어링

T. 042) 625-6904 F. 042) 673-4807



**SPHERICAL PLAINS**

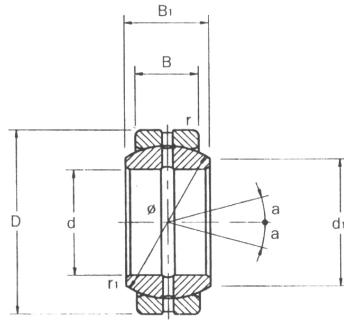
DIN 648 Series E

급유형, mm치수, 일반형

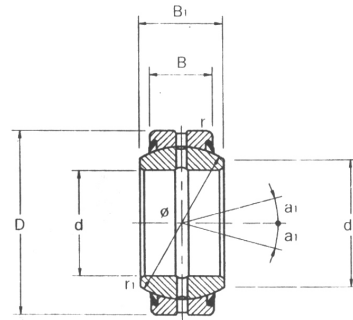
STEEL ON STEEL

METRIC DIMENSION

SEALED OR UNSEALED



GE...ES



GE...ES-2RS

주요 치수 (Dimensions) mm					동부하용량 (Basic Dynamic Load Ratings) C/Kgf	정부하용량 (Basic Static Load Ratings) C/Kgf
Φ	r <sub>1</sub> min	r min	a	a <sub>1</sub>		
16	0.3	0.3	12		960	5,760
18	0.3	0.3	11		1,260	7,560
22	0.3	0.3	8	5	1,980	11,900
25	0.3	0.3	10	7	2,500	15,000
29	0.3	0.3	9	6	3,480	20,900
35.5	0.6	0.6	7	4	5,680	34,100
40.7	0.6	0.6	6	4	7,330	44,000
47	0.6	1	6	4	9,400	56,400
53	0.6	1	7	4	11,700	70,000
60	0.6	1	7	4	15,000	90,000
66	0.6	1	6	4	18,500	111,000
80	1	1	6	3	28,800	173,000
92	1	1	6	4	36,800	221,000
105	1	1	6	4	47,300	284,000
115	1	1	5	3	57,500	345,000
130	1	1	7	5	71,500	429,000
140	1	1	6	4	77,000	462,000
160	1	1	6	4	112,000	672,000
180	1	1	7	5	126,000	756,000
200	1	1	8	6	160,000	960,000
225	1.1	1.1	6	5	180,000	1,080,000
250	1.1	1.1	7	6	250,000	1,500,000
275	1.1	1.1	8	6	275,000	1,650,000
300	1.1	1.1	8	6	300,000	1,800,000

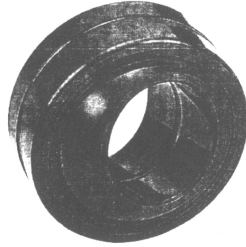
## SPHERICAL PLAINS

급유형, mm치수, 광폭(廣幅)형

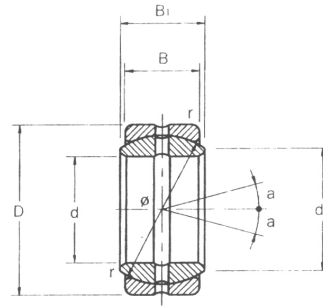
STEEL ON STEEL

METRIC DIMENSION

WIDE WIDTH AND UNSEALED



SB



호칭번호 (Bearing No.)	질량 (Mass) gr.	주요 치수 (Dimensions) mm								동부하용량 (Basic Dynamic Load Ratings) C/Kgf	정부하용량 (Basic Static Load Ratings) C/Kgf
		d	D	B	B <sub>1</sub>	d <sub>1</sub>	Φ	r	a		
SB 12	19	12	22	9	11	14	18	0.5	7	390	9,720
SB 15	28	15	26	11	13	17.5	22	0.5	6	580	14,500
SB 20	53	20	32	14	16	23	28	0.5	4	940	23,500
SB 22	85	22	37	16	19	25.5	32	0.5	6	1,230	30,700
SB 25	116	25	42	18	21	29	36	0.5	5	1,560	38,900
SB 30	225	30	50	23	27	36	45	1	6	2,480	62,100
SB 35	300	35	55	26	30	40	50	1	5	3,120	78,100
SB 40	375	40	62	28	33	44	55	1	6	3,700	92,400
SB 45	600	45	72	31	36	50.5	62	1	5	4,610	115,000
SB 50	870	50	80	36	42	58.5	72	1	5	6,220	156,000
SB 55	1,260	55	90	40	47	64.5	80	1	6	7,680	192,000
SB 60	1,700	60	100	45	53	72.5	90	1	6	9,720	243,000
SB 65	2,050	65	105	47	55	76	94	1	5	10,600	265,000
SB 70	2,220	70	110	50	58	81.5	100	1	5	12,000	300,000
SB 75	3,020	75	120	55	64	89.5	110	1	5	14,500	363,000
SB 80	3,980	80	130	60	70	97.5	120	1	5	17,300	432,000
SB 85	4,290	85	135	63	74	100.5	125	1	6	18,900	473,000
SB 90	4,710	90	140	65	76	105.5	130	1	5	20,300	507,000
SB 95	6,050	95	150	70	82	113.5	140	1	5	23,500	588,000
SB 100	7,420	100	160	75	88	121.5	150	1.5	5	27,000	675,000
SB 110	8,550	110	170	80	93	130	160	1.5	5	30,700	768,000
SB 115	10,300	115	180	85	98	132.5	165	1.5	5	33,700	842,000
SB 120	12,400	120	190	90	105	140	175	1.5	6	37,800	945,000
SB 130	13,800	130	200	95	110	148.5	185	1.5	5	42,200	1,050,000
SB 150	17,000	150	220	105	120	166	205	1.5	5	51,700	1,290,000

▶ 註 현재 SB 70까지 생산합니다.

SB series up to SB 70 are now available.

• 문의 사항 : (주)수덕베어링

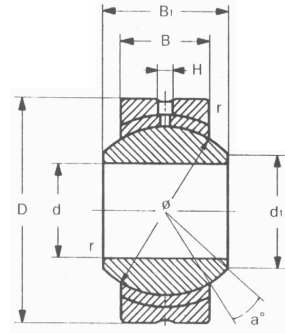
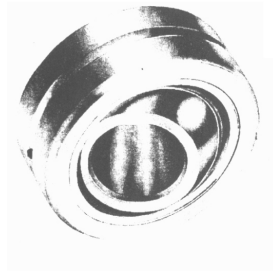
T. 042) 625-6904 F. 042) 673-4807

**SPHERICAL PLAINS**

급유형, mm치수

STEEL ON COMPOSITE MATERIAL

METRIC DIMENSION



JS

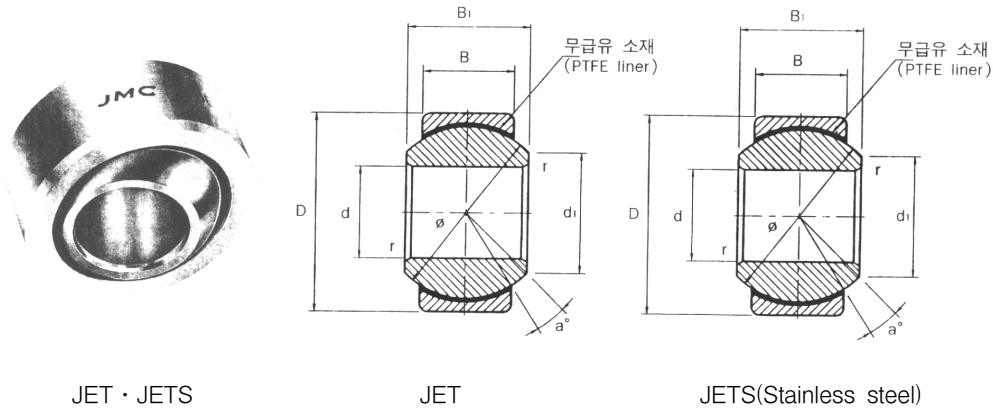
호칭번호 (Bearing No.)	질량 (Mass) gr.	주요치수 (Dimensions) mm								요동각도 (Tilting angle) a°	정부하용량 (Basic Static Load Ratings) C/Kgf
		d	D	B	B <sub>1</sub>	d <sub>1</sub>	H	Φ	r		
<b>JS 5</b>	8.5	5	16	6	8	7.7	1.0	11.112	0.5	13	400
<b>JS 6</b>	13	6	18	6.75	9	9	1.0	12.7	0.5	13	510
<b>JS 8</b>	24	8	22	9	12	10.4	1.0	15.875	0.5	13	860
<b>JS 10</b>	39	10	26	10.5	14	12.9	1.2	19.05	0.5	13	1,200
<b>JS 12</b>	58	12	30	12	16	15.4	1.5	22.225	0.5	13	1,600
<b>JS 14</b>	84	14	34	13.5	19	16.9	1.5	25.4	0.5	15	2,060
<b>JS 16</b>	111	16	38	15	21	19.4	2.5	28.575	0.5	15	2,570
<b>JS 18</b>	160	18	42	16.5	23	21.9	2.5	31.75	0.5	15	3,140
<b>JS 20</b>	210	20	46	18	25	24.4	2.5	34.925	0.5	15	3,770
<b>JS 22</b>	265	22	50	20	28	25.8	2.5	38.1	0.5	15	4,570
<b>JS 25</b>	390	25	56	22	31	29.6	3	42.862	0.5	15	-
<b>JS 30</b>	610	30	66	25	37	34.8	3	50.4	0.5	15	-

## SPHERICAL PLAINS

무급유형, mm치수

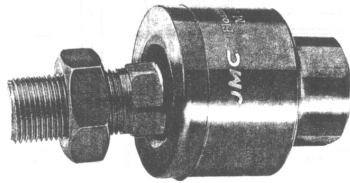
MAINTENANCE-FREE

METRIC DIMENSION

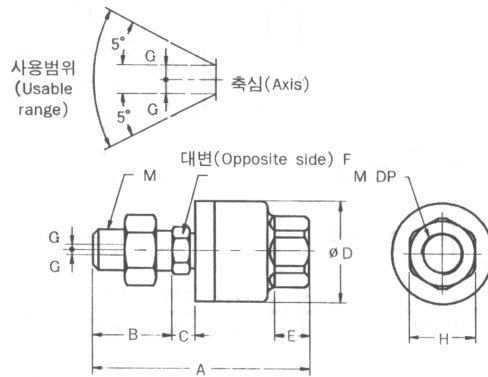


축 경 mm	호칭번호 (Bearing No.)	질량 (Mass) gr.	주 요 치 수 (Dimensions) mm							요동각도 (Tilting angle) a°	정부하용량 (Basic Static Load Ratings) C/Kgf
			d	D	B	B <sub>1</sub>	d <sub>1</sub>	Φ	r		
5	<b>JET 5</b>	7	5	13	6	8	7.7	11.1	0.5	13	400
	<b>JETS 5</b>	7	5	13	6	8	7.7	11.1	0.5	13	400
6	<b>JET 6</b>	10	6	16	6.75	9	8.9	12.7	0.5	13	510
	<b>JETS 6</b>	10	6	16	6.75	9	8.9	12.7	0.5	13	510
8	<b>JET 8</b>	16	8	19	9	12	10.3	15.8	0.5	13	860
	<b>JETS 8</b>	16	8	19	9	12	10.3	15.8	0.5	13	860
10	<b>JET 10</b>	31	10	22	10.5	14	12.9	19.0	0.5	13	1,200
	<b>JETS 10</b>	31	10	22	10.5	14	12.9	19.0	0.5	13	1,200
12	<b>JET 12</b>	65	12	26	12	16	15.4	22.2	0.5	13	1,600
	<b>JETS 12</b>	65	12	26	12	16	15.4	22.2	0.5	13	1,600
14	<b>JET 14</b>	90	14	29	13.5	19	16.8	25.4	0.5	15	2,060
	<b>JETS 14</b>	90	14	29	13.5	19	16.8	25.4	0.5	15	2,060
16	<b>JET 16</b>	100	16	32	15	21	19.3	28.5	0.5	15	2,570
	<b>JETS 16</b>	100	16	32	15	21	19.3	28.5	0.5	15	2,570
18	<b>JET 18</b>	125	18	35	16.5	23	21.8	31.7	0.5	15	3,140
	<b>JETS 18</b>	125	18	35	16.5	23	21.8	31.7	0.5	15	3,140
20	<b>JET 20</b>	180	20	40	18	25	24.3	34.9	0.5	15	3,770
	<b>JETS 20</b>	180	20	40	18	25	24.3	34.9	0.5	15	3,770

## BALL JOINTS



FLOATING JOINTS



호칭번호 (Bearing No.)	주 요 치 수 (Dimensions) mm												적용 실린더 내경 (Bore diaaer of cylinder) Φ
	M	DP	A	B	C	ΦD	E	F	H	요동각도 (Tilting angle)	허용편심량 (Permissible excentricity) G	인장압축력 (Tensile & compressive strenth) Max Kgf	
FJ 5	5×0.8	7	34.5	14	2	16	5	6	10	10°	0.5	12	10, 15
FJ 6	6×1	7	34.5	14	2	16	5	6	10	10°	0.5	12	15
FJ 8	8×1.25	8	44	-	4.5	21	7	7	13	10°	0.5	110	20
FJ 10	10×1.25	9	49.5	-	5	24	8	8	17	10°	0.5	250	25, 30
FJ 12	12×1.75	13	60	-	6	31	11	11	22	10°	0.75	440	30, 40
FJ 14	14×1.5	9	60	-	6	31	11	11	22	10°	0.75	600	40
FJ 16	16×2.0	15	71.5	-	7.5	41	13.5	14	27	10°	1.0	1,100	50
FJ 18	18×1.5	15	74.5	-	7.5	41	13.5	14	27	10°	1.0	1,100	50, 63
FJ 20	20×2.5	18	90.5	30	9.5	50	16	19	32	10°	1.25	1,800	80
FJ 22	22×1.5	18	89.5	-	9.5	50	16	19	32	10°	1.25	1,800	80
FJ 24	24×3	24	110	35	11.5	59.5	20	24	41	10°	2.0	2,800	100
FJ 26	26×1.5	24	110	-	11.5	59.5	20	24	41	10°	2.0	2,800	100
FJ 30	30×1.5	38	152	45	14	79	22	30	46	10°	2.5	5,400	125, 140
FJ 36	36×1.5	42	178	55	16	96	24	36	55	10°	3.0	7,100	160