

(주)수덕베어링

5. 유닛 볼베어링/하우징

소형 유닛 볼베어링

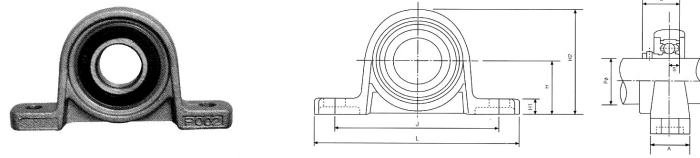
유닛형 하우징



유닛용 볼베어링

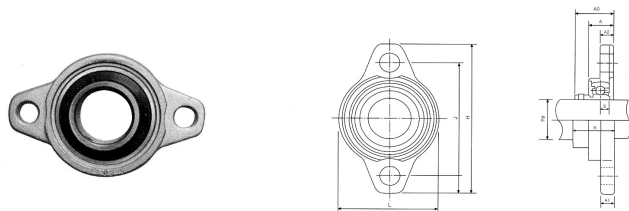
- 볼역할을 하는 내륜과 하우징 역할을 하는 외륜의 구면에서의 미끄럼 작용을 이용하는 미끄럼 베어링의 일종이다. 저속에서 고하중의 경방향 하중을 받는곳, 조임성이 불량한곳, 회전 또는 요동이 발생하는 곳에 적합하다.

소형유니트SBP(UP)

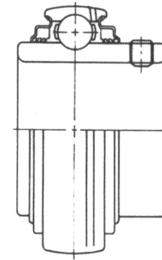
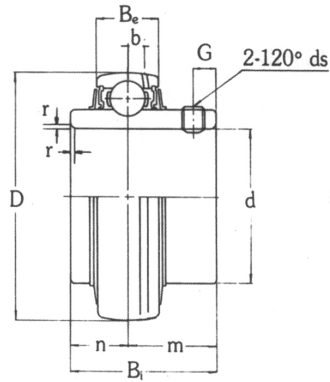


형 번	축경	치 수(mm)											볼트 mm
		H	L	J	A	N	H ₁	H ₂	B	S	C ₁	Z _s	
SBP-000	10	18	67	53	16	7	6	35	14	4	5.5	33	M6
SBP-001	12	19	71	56	16	7	6	38	15	4	5	33	M6
SBP-002	15	22	80	63	16	7	7	43	17	4.5	4	34	M6
SBP-003	17	24	85	67	18	7	7	47	18	5	5.5	38	M6
SBP-004	20	28	100	80	20	10	9	55	21	6	7	46	M8
SBP-005	25	32	112	90	20	10	10	62	23	6	6	47	M8
SBP-006	30	36	132	106	26	13	11	70	25	6.5	6	50	M10

소형유니트SBFL(UFL)

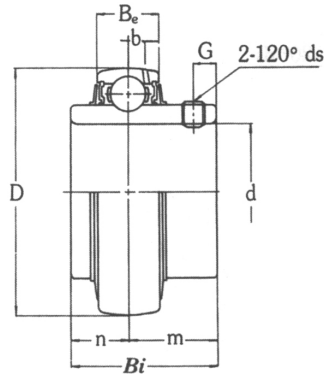


형 번	축경	치 수(mm)												볼트 mm
		H	J	A ₁	A ₂	A	N	L	A ₀	B	S	C ₁	Z _s	
SBP-000	10	60	45	5.5	5.5	12	7	36	16	14	4	6	22	M6
SBP-001	12	63	48	5.5	5.5	12	7	38	16	15	4	5.5	22	M6
SBP-002	15	67	53	6.5	6.5	13	7	42	19	17	4.5	5	24	M6
SBP-003	17	71	56	7	7	14	7	46	20	18	5	6	26	M6
SBP-004	20	90	71	8	8	16	10	55	23	21	6	7.5	31	M8
SBP-005	25	95	75	8	8	16	10	60	25	23	6	7	32	M8
SBP-006	30	112	85	9	9	18	13	70	27	25	6.5	6.5	34	M10

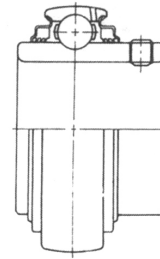
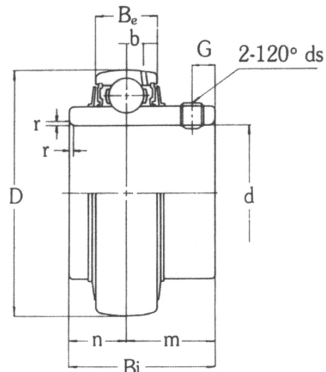


베 어 링 호칭번호	축지름	주 요 치 수 (mm)									기본동정격하중		기본정격하중		중량 (Kgf)
	d										C		Co		
	(mm)	D	B _e	B ₁	n	m	r	b	G	ds	(Kgf)	(N)	(Kgf)	(N)	
UC 201	12	47	16	31	12.7	18.3	1	4.0	5	M 6×0.75	1,280	12,600	650	6,400	0.21
UC 202	12	47	16	31	12.7	18.3	1	4.0	5	M 6×0.75	1,280	12,600	650	6,400	0.19
UC 203	17	47	16	31	12.7	18.3	1	4.0	5	M 6×0.75	1,280	12,600	650	6,400	0.18
UC 204	20	47	16	31	12.7	18.3	1.5	4.0	5	M 6×0.75	1,280	12,600	650	6,400	0.16
UC 205	25	52	17	34	14.3	19.7	1.5	4.2	5.5	M 6×0.75	1,400	13,700	730	7,200	0.20
UC 206	30	62	19	38.1	15.9	22.2	1.5	5.2	6	M 6×0.75	1,950	19,100	1,050	10,300	0.32
UC 207	35	72	20	42.9	17.5	25.4	2	5.8	6.5	M 8×1	2,570	25,200	1,430	14,000	0.48
UC 208	40	80	21	49.2	19	30.2	2	6.2	8	M 8×1	2,910	28,500	1,650	16,200	0.64
UC 209	45	85	22	49.2	19	30.2	2	6.5	8	M 8×1	3,200	31,400	1,850	18,100	0.68
UC 210	50	90	23	51.6	19	32.6	2	6.5	9	M10×1.25	3,510	34,400	2,100	20,600	0.80
UC 211	55	100	25	55.6	22.2	33.4	2.5	7.3	9	M10×1.25	4,300	42,500	2,660	26,100	1.11
UC 212	60	110	27	65.1	25.4	39.7	2.5	8.0	10.5	M10×1.25	5,240	51,400	3,300	32,400	1.54
UC 213	65	120	29	65.1	25.4	39.7	2.5	8.5	12	M10×1.25	5,720	56,100	3,650	35,800	1.85
UC 214	70	125	29	74.6	30.2	44.4	2.5	8.7	12	M12×1.5	6,220	61,000	4,000	39,200	2.05
UC 215	75	130	30	77.8	33.3	44.5	2.5	9.2	12	M12×1.5	6,740	66,100	4,400	43,100	2.21
UC 216	80	140	32	82.6	33.3	49.3	3	9.6	14	M12×1.5	7,260	71,200	4,750	46,600	2.79
UC 217	85	150	34	85.7	34.1	51.6	3	10.5	14	M12×1.5	8,390	82,300	5,600	54,900	3.45
UC 218	90	160	36	96	39.7	56.3	3	11.1	15	M12×1.5	9,600	94,100	6,450	63,300	4.35

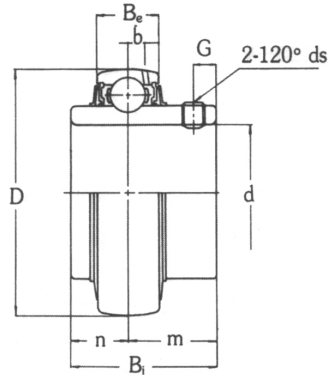
유니트용 볼베어링(원통구멍형, 직경계열2) / 97
(내경 인치계열)



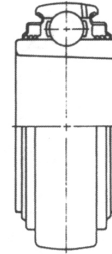
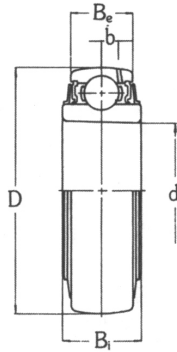
베 어 링 호칭번호	축지름	주 요 치 수 (mm)								기본동정격하중		기본정격하중		중량 (Kgf)
	d									C		Co		
	(mm)	D	B _e	B ₁	n	m	b	G	ds	(Kgf)	(N)	(Kgf)	(N)	
UC 201-8	1/2	47	16	31	12.7	18.3	4.0	5	1/4-28 UNF	1,280	12,600	650	6,400	0.21
UC 202-10	5/8	47	16	31	12.7	18.3	4.0	5	M 6×0.75	1,280	12,600	650	6,400	0.19
UC 204-12	3/4	47	16	31	12.7	18.3	4.0	5	1/4-28 UNF	1,280	12,600	650	6,400	0.17
UC 205-14 UC 205-16	7/8 1	52	17	34	14.3	19.7	4.2	5.5	1/4-28 UNF	1,400	13,700	730	7,200	0.23 0.2
UC 206-18	11/8	62	19	38.1	15.9	22.2	5.2	6	1/4-28 UNF	1,950	19,100	1,050	10,300	0.34
UC 207-20 UC 207-22	11/4 13/8	72	20	42.9	17.5	25.4	5.8	6.5	5/16-24 UNF	2,570	25,200	1,430	14,000	0.54 0.48
UC 208-24	11/2	80	21	49.2	19	30.2	6.2	8	5/16-24 UNF	2,910	28,500	1,650	16,200	0.68
UC 209-26 UC 209-28	15/8 13/4	85	22	49.2	19	30.2	6.5	8	5/16-24 UNF	3,200	31,400	1,850	18,100	0.78 0.70
UC 210-30	17/8	90	23	51.6	19	32.6	6.5	9	3/8-24UNF	3,510	34,400	2,100	20,600	0.87
UC 211-32 UC 211-34	2 21/8	100	25	55.6	22.2	33.4	7.3	9	3/8-24 UNF	4,330	42,500	2,660	26,100	1.26 1.15
UC 212-36 UC 212-38	21/4 23/8	110	27	65.1	25.4	39.7	8.0	10.5	3/8-24 UNF	5,240	51,400	3,300	32,400	1.67 1.52
UC 213-40	21/2	120	29	65.1	25.4	39.7	8.5	12	3/8-24 UNF	5,720	56,100	3,650	35,800	1.94
UC 214-44	23/4	125	29	74.6	30.2	44.4	8.7	12	7/16-20 UNF	6,220	61,000	4,000	39,200	2.06
UC 215-48	3	130	30	77.8	33.3	44.5	9.2	12	7/16-20 UNF	6,740	66,100	4,400	43,100	2.12
UC 217-52	31/4	150	34	85.7	34.1	51.6	10.5	14	7/16-20 UNF	8,390	82,300	5,600	54,900	3.66
UC 218-56	31/2	160	36	96	39.7	56.3	11.1	15	7/16-20 UNF	9,600	94,100	6,450	63,300	4.46



베 어 링 호칭번호	축지름	주 요 치 수 (mm)									기본동정격하중		기본정격하중		중량 (Kgf)
	d										C		Co		
	(mm)	D	B _e	B ₁	n	m	r	b	G	ds	(Kgf)	(N)	(Kgf)	(N)	
UC 305	25	62	22	38	15	23	2	6	6	M 6×0.75	2,100	20,600	1,090	10,700	0.45
UC 306	30	72	24	43	17	26	2	6.5	6	M 6×0.75	2,660	26,100	1,440	14,100	0.56
UC 307	35	80	26	48	19	29	2.5	7.5	8	M 8×1	3,330	32,700	1,840	18,000	0.71
UC 308	40	90	28	52	19	33	2.5	8.4	10	M10×1.25	4,070	39,900	2,300	22,600	1.00
UC 309	45	100	30	57	22	35	2.5	9	10	M10×1.25	4,890	48,000	2,950	28,900	1.33
UC 310	50	110	32	61	22	39	3	10	12	M12×1.5	6,200	60,800	3,650	35,800	1.69
UC 311	55	120	34	66	25	41	3	10.7	12	M12×1.5	7,160	70,200	4,300	42,000	1.90
UC 312	60	130	36	71	26	45	3.5	11.5	12	M12×1.5	8,180	80,200	5,000	49,000	2.60
UC 313	65	140	38	75	30	45	3.5	12.2	12	M12×1.5	9,270	90,900	5,750	56,000	3.16
UC 314	70	150	40	78	33	45	3.5	13	12	M12×1.5	10,400	102,000	6,550	64,000	3.90
UC 315	75	160	42	82	32	50	3.5	13.8	14	M14×1.5	11,300	111,000	7,400	73,000	4.70
UC 316	80	170	44	86	34	52	3.5	15	14	M14×1.5	12,300	121,000	8,250	81,000	5.60
UC 317	85	180	46	96	40	56	4	15	16	M16×1.5	13,300	130,000	9,200	90,000	6.90
UC 318	90	190	48	96	40	56	4	15.5	16	M16×1.5	14,300	140,000	10,200	100,000	7.87
UC 319	95	200	50	103	41	62	4	16.5	18	M16×1.5	15,300	150,000	11,300	111,800	8.91
UC 320	100	215	54	108	42	66	4	18	20	M18×1.5	17,300	170,000	13,500	132,000	11.2
UC 321	105	225	56	112	44	68	4	19	20	M18×1.5	18,400	180,000	14,700	144,000	12.7
UC 322	110	240	60	117	46	71	4	20	20	M18×1.5	20,500	201,000	17,200	169,000	15.1
UC 324	120	260	64	126	51	75	4	21	20	M18×1.5	20,700	203,000	17,400	171,000	19.0
UC 326	130	280	68	135	54	81	5	22	20	M20×1.5	22,900	225,000	20,200	198,000	23.6
UC 328	140	300	72	145	59	86	5	23	20	M20×1.5	25,300	248,000	23,200	228,000	29.4

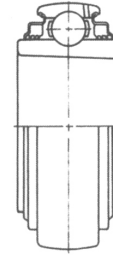
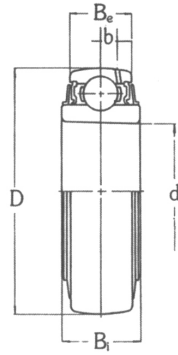


베 어 링 호칭번호	축지름	주 요 치 수 (mm)									기본동정격하중		기본정격하중		중량 (Kgf)
	d										C		Co		
	(mm)	D	B _e	B ₁	n	m	r	b	G	ds	(Kgf)	(N)	(Kgf)	(N)	
UC 305-14 UC 305-16	7/8 1	62	22	38	15	23	2	6	6	1/4-28UNF	2,100	20,600	1,090	10,700	0.48 0.44
UC 306-18	11/8	72	24	43	17	26	2	6.5	6	1/4-28UNF	2,660	26,100	1,440	14,100	0.58
UC 307-20 UC 307-22	11/4 13/8	80	26	48	19	29	2.5	7.5	8	5/16-28UNF	3,330	32,700	1,840	18,000	0.77 0.71
UC 308-24	11/2	90	28	52	19	33	2.5	8.4	10	3/8-24UNF	4,070	39,900	2,300	22,600	1.05
UC 309-26 UC 309-28	15/8 13/4	100	30	57	22	35	2.5	9	10	3/8-24UNF	4,890	48,000	2,950	28,900	1.44 1.35
UC 310-30	17/8	110	32	61	22	39	3	10	12	7/16-20UNF	6,200	60,800	3,650	35,800	1.78
UC 311-32 UC 311-34	2 21/8	120	34	66	25	41	3	10.7	12	7/16-20UNF	7,160	70,200	4,300	42,000	2.08 1.95
UC 312-36 UC 312-38	21/4 23/8	130	36	71	26	45	3.5	11.5	12	7/16-20UNF	8,180	90,900	5,000	49,000	2.74 2.48
UC 313-40	21/2	140	38	75	30	45	3.5	12.2	12	7/16-20UNF	9,270	90,900	5,750	56,000	3.24
UC 314-44	23/4	150	40	78	33	45	3.5	13	12	7/16-20UNF	10,400	102,000	6,550	64,000	3.91
UC 315-48	3	160	42	82	32	50	4	13.8	14	9/16-18UNF	11,300	111,000	7,400	73,000	4.61
UC 317-52	31/4	180	46	96	40	56	4	15	16	5/8-18UNF	13,300	130,000	9,200	90,000	7.14
UC 318-56	31/2	190	48	96	40	56	4	15.5	16	5/8-18UNF	14,300	140,000	10,200	100,000	8.03
UC 319-60	33/4	200	50	103	41	62	4	16.5	18	5/8-18UNF	15,300	150,000	11,300	111,000	8.88
UC 320-64	4	215	54	108	42	66	4	18	20	5/8-18UNF	17,300	170,000	13,500	132,000	11.0
UC 326-82	51/8	280	68	135	54	81	5	22	20	3/4-16UNF	22,900	225,000	20,200	198,000	23.6
UC 328-88	51/2	300	72	145	59	86	5	23	20	3/4-16UNF	25,300	248,000	23,200	228,000	29.4



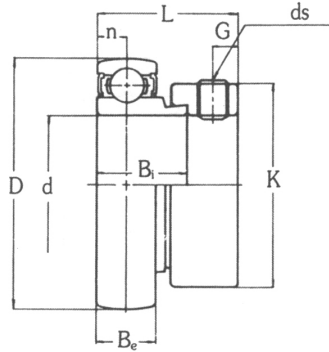
베 어 링 호칭번호	축지름	주 요 치 수 (mm)				기본동정격하중		기본정격하중		중량 (Kgf)
	d					C		Co		
	(mm)	D	B _e	B ₁	b	(Kgf)	(N)	(Kgf)	(N)	
UK 205	25	52	17	22	4.2	1,400	13,700	730	7,200	0.16
UK 205 L 2				24						
UK 206	30	62	19	24	5.2	1,950	19,100	1,050	10,300	0.25
UK 206 L 3				27						
UK 207	35	72	20	26	5.8	2,570	25,200	1,430	14,000	0.37
UK 207 L 3				30						
UK 208	40	80	21	27	6.2	2,910	28,500	1,650	16,200	0.47
UK 208 L 3				34						
UK 209	45	85	22	28	6.5	3,200	31,400	1,850	18,100	0.52
UK 209 L 3				36						
UK 210	50	90	24	30	6.5	3,510	34,400	2,100	20,600	0.59
UK 210 L 3				36						
UK 211	55	100	25	32	7.3	4,330	42,500	2,660	26,000	0.80
UK 211 L 3				40						
UK 212	60	110	27	34	8.0	5,240	51,400	3,300	32,400	1.02
UK 212 L 3				47						
UK 213	65	120	29	37	8.5	5,720	56,100	3,650	35,800	1.34
UK 213 L 3				47						
UK 215	75	130	30	38	9.2	6,740	66,100	4,400	43,100	1.50
UK 215 L 3				51						
UK 216	80	140	32	40	9.6	7,260	71,200	4,750	46,600	1.96
UK 226 L 3				55						
UK 217	85	150	34	43	10.5	8,390	82,300	5,600	54,900	2.42
UK 217 L 3				57						
UK 218	90	160	36	46	11.1	9,600	94,100	6,450	63,300	2.90
UK 228 L 3				63						

유니트용 베어링(원통구멍형, 직경계열3) / 101
(내경 인치계열)

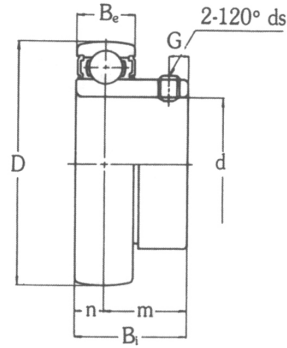


베 어 링 호칭번호	축지름	주 요 치 수 (mm)				기본동정격하중		기본정격하중		중량 (Kgf)
	d					C		Co		
	(mm)	D	B _e	B _i	b	(Kgf)	(N)	(Kgf)	(N)	
UK 305	25	62	22	27	5	2,100	20,600	1,090	10,700	0.40
UK 306	30	72	24	30	6.5	2,660	26,100	1,440	14,100	0.47
UK 307	35	80	26	33	7.5	3,330	32,700	1,840	18,000	0.60
UK 308	40	90	28	35	8.4	4,070	39,900	2,300	22,600	0.80
UK 309	45	100	30	38	9	4,890	48,000	2,950	28,900	1.08
UK 310	50	110	32	40	10	6,200	60,800	3,650	35,800	1.38
UK 311	55	120	34	43	10.7	7,160	70,200	4,300	42,000	1.78
UK 312	60	130	36	46	11.5	8,180	80,200	5,000	49,000	2.06
UK 313	65	140	38	48	12.2	9,270	90,900	5,750	56,000	2.71
UK 315	75	160	42	54	13.8	11,300	111,000	7,400	73,000	3.80
UK 316	80	170	44	55	15	12,300	121,000	8,250	81,000	4.39
UK 317	85	180	46	60	15	13,300	130,000	9,200	90,000	5.30
UK 318	90	190	48	60	15.5	14,300	140,000	10,200	100,000	6.20
UK 319	95	200	50	66	16.5	15,300	150,000	11,300	111,000	7.31
UK 320	100	215	54	68	18	17,300	170,000	13,500	132,000	8.70
UK 322	110	240	60	78	20	20,500	201,000	17,200	169,000	12.2
UK 324	120	260	64	87	21	20,700	203,000	17,400	171,000	16.1
UK 326	130	280	68	87	22	22,900	225,000	20,200	198,000	18.8
UK 328	140	300	72	97	23	25,300	248,000	23,200	228,000	23.9

102 / 유니트용 볼베어링(원통구멍형, 직경계열2)
(편심 칼라체결방식)

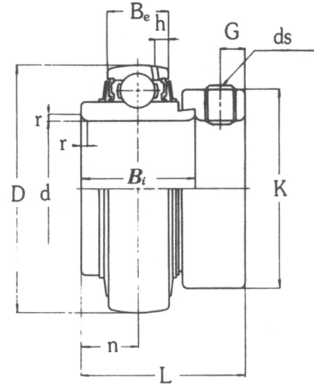


베 어 링 호칭번호	축 지 림		주 요 치 수 (mm)								기본동정격하중		기본정격하중		중량 (Kgf)
	d										C		Co		
	(in)	(mm)	D	B _e	L	B _i	n	K	G	d _s	(Kgf)	(N)	(Kgf)	(N)	
SA 201 SA 201-8	1/2	12	40	12	28.6	19	6	28.6	4.8	M6×1 1/4-28UNF	960	9,400	460	4,500	0.13
SA 202 SA 202-10	5/8	15	40	12	28.6	19	6	28.6	4.8	M6×1 1/4-28UNF	960	9,400	460	4,500	0.13
SA 203	3/4	17	40	12	28.6	19	6	28.6	4.8	M6×1 1/4-28UNF	960	9,400	460	4,500	0.13
SA 204-12 SA 204		20	47	14	31	20	7	32	4.8	M6×1	1,280	12,600	650	7,200	0.15
SA 204-14 SA 205 SA 205-16	7/8 1	25	52	15	31	21	7.5	38.1	4.8	1/4-28UNF M6×1 1/4-28UNF	1,400	13,700	730	6,400	0.22
SA 206-18 SA 206 SA 206-20	11/8 11/4	30	62	16	35.7	22	8	44.4	6	5/16-24UNF M8×1 5/16-24UNF	1,950	19,100	1,050	10,300	0.30
SA 207-20 SA 207-22 SA 207	11/4 13/8	35	72	17	38.9	23	8.5	55.6	6.8	5/16-24UNF 5/16-24UNF M8×1	2,570	25,200	1,430	14,000	0.50
SA 208-24 SA 208	11/2	40	80	18	43.7	27	9	60.3	6.8	5/16-24UNF M8×1	2,910	28,500	1,650	16,200	0.67

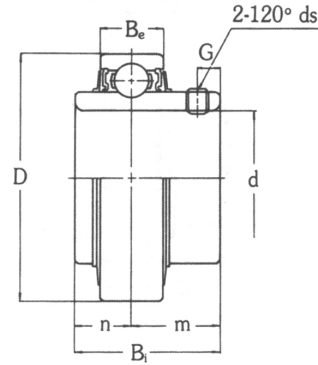


베 어 링 호칭번호	축 지 림		주 요 치 수 (mm)							기본동정격하중		기본정격하중		중량 (Kgf)
	d									C		Co		
	(in)	(mm)	D	B _e	B _i	n	m	G	d _s	(Kgf)	(N)	(Kgf)	(N)	
SB 201 SB 201-8	1/2	12	40	12	22	6	16	4.8	M6×0.75 1/4-28UNF	960	9,400	460	4,500	0.10
SB 202 SB 202-10	5/8	15	40	12	22	6	16	4.8	M6×0.75 1/4-28UNF	960	9,400	460	4,500	0.10
SB 203		17	40	12	22	6	16	4.8	M6×0.75	960	9,400	460	4,500	0.10
SB 204-12 SB 204	3/4	20	47	14	25	7	18	4.8	1/4-28UNF M6×0.75	1,280	12,600	650	6,400	0.15
SB 204-14 SB 205 SB 205-16	7/8	25	52	15	27	7.5	19.5	5.5	1/4-28UNF M6×0.75 1/4-28UNF	1,400	13,700	730	7,200	0.18
SB 206-18 SB 206	1 1/8	30	62	16	30	8	22	6	1/4-28UNF M6×0.75	1,950	19,100	1,050	10,300	0.27
SB 207-20 SB 207-22 SB 207	1 1/4 1 3/8	35	72	17	32	8.5	23.5	6.5	5/16-24UNF M8×1 5/16-24UNF	2,570	25,200	1,430	14,000	0.42
SB 208-24 SB 208	1 1/2	40	80	18	34	9	25	8	5/16-24UNF M8×1	2,910	28,500	1,650	16,200	0.60

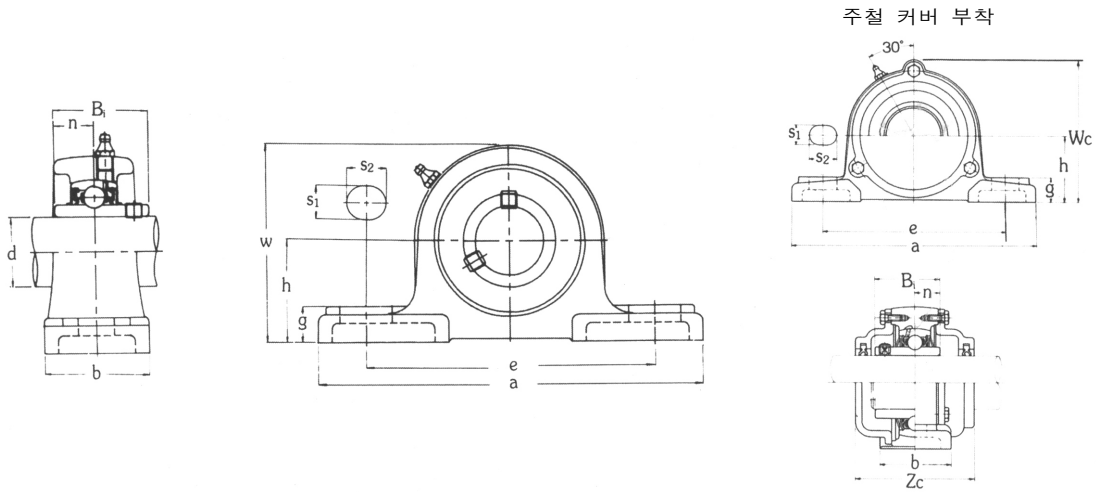
104 / 유니트용 볼베어링(원통구멍형, 직경계열2)
(편심 칼라체결방식)



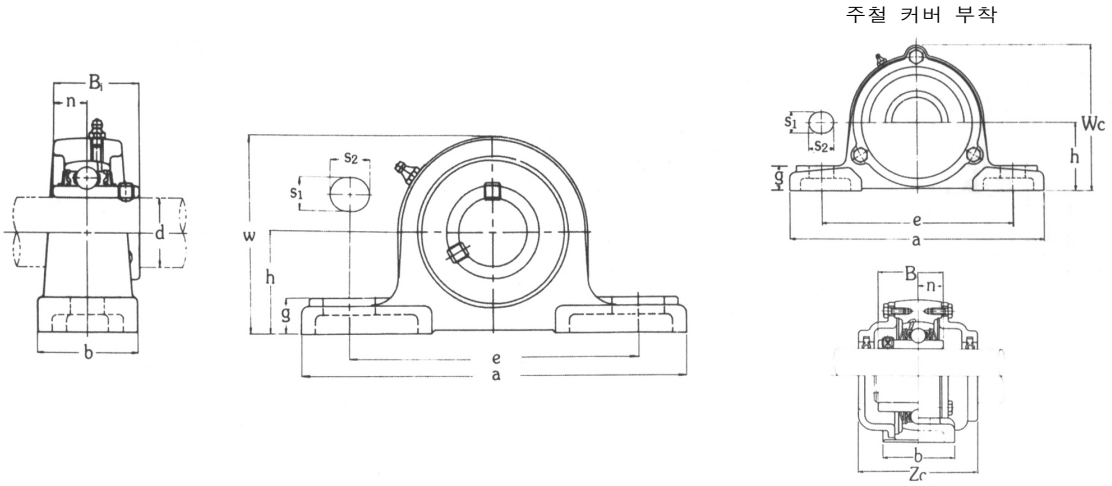
베 어 링 호칭번호	축지름	주 요 치 수 (mm)										기본동정격하중		기본정격하중		중량 (Kgf)
	d											C		Co		
	(mm)	D	B _e	L	B _i	n	r	b	k	G	ds	(Kgf)	(N)	(Kgf)	(N)	
HC 204-12 HC 204	20	47	16	43.7	34.1	17.1	1.5	4	32	4.8	1/4-28UNF M 6×1.0	1,280	12,600	650	6,400	0.22
HC 205-14 HC 205 HC 205-16	25	52	17	44.4	34.9	17.5	1.5	4.2	38.1	4.8	1/4-28UNF M 6×1.0 1/4-28UNF	1,400	13,700	730	7,200	0.25
HC 2046-18 HC 206	30	62	19	48.4	36.5	18.3	1.5	5.2	44.4	6	5/16-24UNF M 8×1.0	1,950	19,100	1,050	10,300	0.41
HC 207-20 HC 207-22 HC 207	35	72	20	51.2	37.7	18.8	2	5.8	55.6	6.8	5/16-24UNF 5/16-24UNF M 8×1.0	2,570	25,200	1,430	14,000	0.61
HC 208-24 HC 208	40	80	21	56.4	42.9	21.4	2	6.2	60.3	6.8	5/16-24UNF M 8×1.0	2,910	28,500	1,650	16,200	0.78
HC 209-26 HC 209-28 HC 209	45	85	22	56.4	42.9	21.4	2	6.5	63.5	6.8	5/16-24UNF 5/16-24UNF M 8×1.0	3,200	31,400	1,850	18,100	0.85
HC 210-30 HC 210-31 HC 210	50	90	23	62.7	49.2	24.6	2	6.5	69.8	6.8	5/16-24UNF 5/16-24UNF M 8×1.0	3,510	34,400	2,100	20,600	1.01
HC 211-32 HC 211-34 HC 211	55	100	25	71.4	55.6	27.8	2.5	7.3	76.2	8	7/16-20UNF 7/16-20UNF M12×1.5	4,330	42,500	2,660	26,000	1.39
HC 212-36 HC 212 HC 212-38	60	110	27	77.8	61.9	31	2.5	8	84.1	8	7/16-20UNF M12×1.5 7/16-20UNF	5,240	51,400	3,330	32,400	1.87



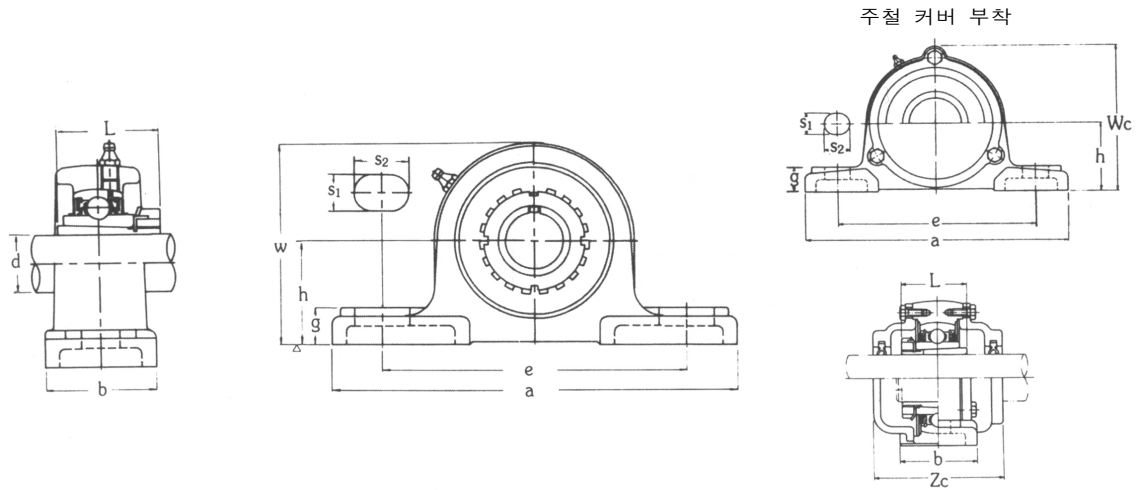
베 어 링 호칭번호	축 지 림		주 요 치 수 (mm)							기본동정격하중		기본정격하중		중량 (Kgf)
	d									C		Co		
	(in)	(mm)	D	B _e	B _i	n	m	G	d _s	(Kgf)	(N)	(Kgf)	(N)	
UR 201 UR 201-8	1/2	12	47	16	31	12.7	18.3	5	M6×0.75 1/4-28UNF	1,280	12,600	650	6,400	0.22
UR 202 UR 202-10	5/8	15	47	16	31	12.7	18.3	5	M6×0.75 1/4-28UNF	1,280	12,600	650	6,400	0.22
UR 203		17	47	16	31	12.7	18.3	5	M6×0.75	1,280	12,600	650	6,400	0.21
UR 204-12 UR 204	3/4	20	47	16	31	12.7	18.3	5	1/4-28UNF M6×0.75	1,280	12,600	650	6,400	0.21
UR 204-14 UR 205 UR 205-16	7/8	20	52	17	34	14.3	19.7	5.5	1/4-28UNF M6×0.75 1/4-28UNF	1,400	13,700	730	7,200	0.23
UR 206-18 UR 206	1 1/8	30	62	19	38.1	15.9	22.2	6	1/4-28UNF M6×0.75	1,950	19,100	1,050	10,300	0.35
UR 207-20 UR 207-22 UR 207	13/4 13/8	35	72	20	42.9	17.5	25.4	6.5	5/16-24UNF 5/16-24UNF M8×1	2,570	25,200	1,430	14,000	0.52
UR 208-24 UR 208	1 1/2	40	80	21	49.2	19	30.2	8	5/16-24UNF M8×1	2,910	28,500	1,650	16,200	0.66



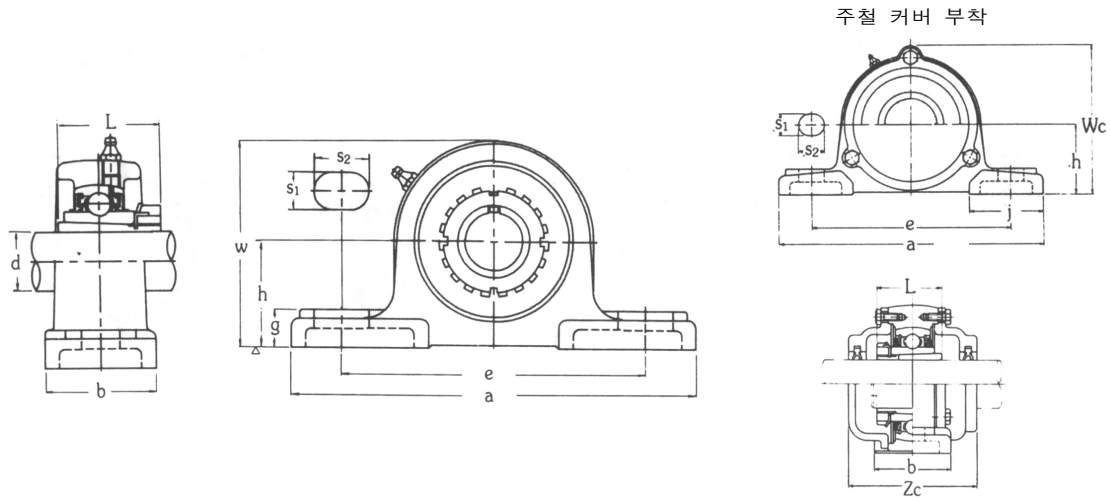
유 니 트 호칭번호	축지름	주 요 치 수 (mm)												설치 볼트 호칭	베 어 링			하우징의 호칭번호	중량 (kgf)
	d (mm)	h	a	e	b	s ₁	s ₂	g	w	B _i	n	Wc	Zc		호칭번호	기본정격하중			
																C(kgf)	Co(kgf)		
UCP 201	12	30.2	127	95	38	13	19	12	60	31	12.7	67	62	M10	UC 201	1,280	650	P 203	0.63
UCP 202	15	30.2	127	95	38	13	19	12	60	31	12.7	67	62	M10	UC 202	1,280	650	P 203	0.61
UCP 203	17	30.2	127	95	38	13	19	12	60	31	12.7	67	62	M10	UC 203	1,280	650	P 203	0.60
UCP 204	20	33.3	127	95	38	13	19	13	64	31	12.7	70	62	M10	UC 204	1,280	650	P 204	0.66
UCP 205	25	36.5	140	105	38	13	19	13	71	34	14.3	76	70	M10	UC 205	1,400	730	P 205	0.80
UCP 206	30	42.9	165	121	48	17	21	15	84	38.1	15.9	88	75	M14	UC 206	1,950	1,050	P 206	1.3
UCP 207	35	47.6	167	127	48	17	21	16	93	42.9	17.5	99	80	M14	UC 207	2,570	1,430	P 207	1.6
UCP 208	40	49.2	184	137	54	17	21	17	98	49.2	19	105	90	M14	UC 208	2,910	1,650	P 208	2.0
UCP 209	45	54	190	146	54	17	21	17	106	49.2	19	113	95	M14	UC 209	3,200	1,850	P 209	2.2
UCP 210	50	57.2	206	159	60	20	22	19	113	51.6	19	119	100	M16	UC 210	3,510	2,100	P 210	2.9
UCP 211	55	63.5	219	171	60	20	22	19	125	55.6	22.2	130	100	M16	UC 211	4,330	2,660	P 211	3.9
UCP 212	60	69.8	241	184	70	20	25	22	138	65.1	25.4	143	115	M16	UC 212	5,240	3,300	P 212	4.9
UCP 213	65	76.2	265	203	70	25	30	25	150	65.1	25.4	155	120	M20	UC 213	5,720	3,650	P 213	5.9
UCP 214	70	79.4	266	210	72	25	30	28	156	74.6	30.2	162	135	M20	UC 214	6,220	4,000	P 214	6.8
UCP 215	75	82.6	275	217	74	25	30	28	162	77.8	33.3	168	135	M20	UC 215	6,740	4,400	P 215	7.4
UCP 216	80	88.9	292	232	78	25	35	32	174	82.6	33.3	181	145	M20	UC 216	7,260	4,750	P 216	9.0
UCP 217	85	95.2	310	247	83	25	40	32	185	85.7	34.1	191	155	M20	UC 217	8,390	5,600	P 217	10.8
UCP 218	90	101.6	327	262	88	27	45	34	198	96	39.7	204	165	M22	UC 218	9,600	6,450	P 218	13.9



유 니 트 호칭번호	축지름	주 요 치 수 (mm)												설치 볼트 호칭	베 어 링			하우징의 호칭번호	중량 (kgf)
	d (mm)	h	a	e	b	s ₁	s ₂	g	w	b1	n	Wc	Zc		호칭번호	기본정격하중			
																C(kgf)	Co(kgf)		
UCP 305	25	45	175	132	45	17	20	16	85	38	15	91	80	M14	UC 305	2,100	1,090	P 305	1.7
UCP 306	30	50	180	140	50	17	20	17	95	43	17	105	85	M14	UC 306	2,660	1,440	P 306	2.2
UCP 307	35	56	210	160	56	17	25	19	107	48	19	115	95	M14	UC 307	3,330	1,840	P 307	3.0
UCP 308	40	60	220	170	60	17	27	19	118	52	19	125	105	M14	UC 308	4,070	2,300	P 308	3.8
UCP 309	45	67	245	190	67	20	30	21	132	57	22	140	110	M16	UC 309	4,890	2,950	P 309	4.9
UCP 310	50	75	275	212	75	20	35	24	148	61	22	156	120	M16	UC 310	6,200	3,650	P 310	6.6
UCP 311	55	80	310	236	80	20	38	27	158	66	25	166	125	M16	UC 311	7,160	7,160	P 311	7.9
UCP 312	60	85	330	250	85	25	38	29	167	71	26	179	135	M20	UC 312	8,180	8,180	P 312	9.5
UCP 313	65	90	340	260	90	25	38	32	176	75	30	190	140	M20	UC 313	9,270	9,270	P 313	10.7
UCP 314	70	95	360	280	90	27	40	35	186	78	33	200	140	M22	UC 314	10,400	6,550	P 314	12.4
UCP 315	75	100	380	290	100	27	40	35	198	82	32	210	150	M22	UC 315	11,300	7,400	P 315	14.8
UCP 316	80	106	400	300	110	27	40	35	209	86	34	221	155	M22	UC 316	12,300	8,250	P 316	18.5
UCP 317	85	112	420	320	110	33	45	40	220	96	40	235	170	M27	UC 317	13,300	9,200	P 317	20.3
UCP 318	90	118	430	330	110	33	45	40	234	96	40	246	170	M27	UC 318	14,300	10,200	P 318	22.8
UCP 319	95	125	470	360	120	36	50	46	248	103	41	258	180	M30	UC 319	15,300	11,300	P 319	29.0
UCP 320	100	140	490	380	120	36	50	46	273	108	42	283	190	M30	UC 320	17,300	13,500	P 320	35.1
UCP 321	105	140	490	380	120	36	50	46	278	112	44	290	195	M30	UC 321	18,400	14,700	P 321	37.6
UCP 322	110	150	520	400	140	40	55	50	296	117	46	313	200	M33	UC 322	20,500	17,200	P 322	44.0
UCP 324	120	160	570	450	140	40	55	50	316	126	51	335	215	M33	UC 324	20,700	17,400	P 324	55.4
UCP 326	130	180	600	480	140	40	55	50	355	135	54	375	225	M33	UC 326	22,900	20,200	P 326	72.1
UCP 328	140	200	620	500	140	40	55	60	393	145	59	407	235	M33	UC 328	25,300	23,200	P 328	92.5

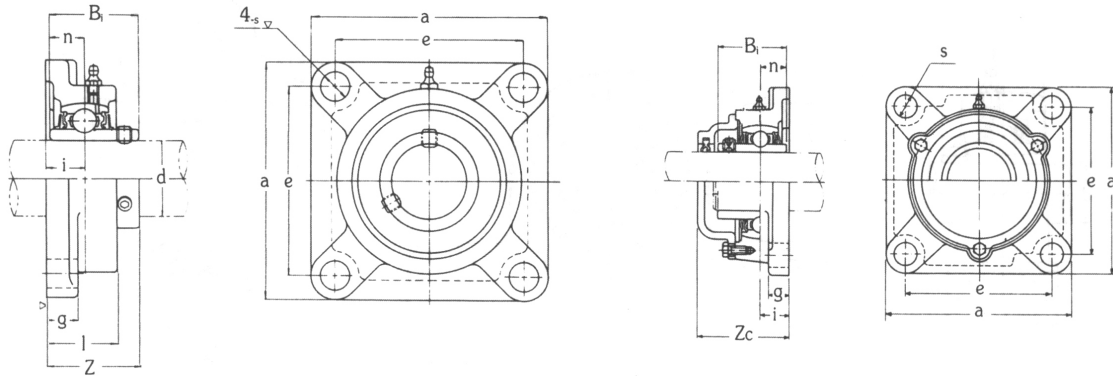


유 니 트 호칭번호	축지름	주 요 치 수 (mm)											설치 볼트 호칭	베 어 링			적 용 어댑터	중량 (kgf)
	d													호칭번호	기본정격하중			
	(mm)	h	a	e	b	s ₁	s ₂	g	w	L	Wc	Zc			C(kgf)	Co(kgf)		
UKP 205	20	36.5	140	105	38	13	19	13	71	29	76	70	M10	UK 205	1,400	730	H 305	0.84
UKP 206	25	42.9	165	121	48	17	21	15	84	31	88	75	M14	UK 206	1,950	1,050	H 306	1.4
UKP 207	30	47.6	167	127	48	17	21	16	93	35	99	80	M14	UK 207	2,570	1,430	H 307	1.7
UKP 208	35	49.2	184	137	54	17	21	17	98	36	105	90	M14	UK 208	2,910	1,650	H 308	2.0
UKP 209	40	54	190	146	54	17	21	17	106	39	113	95	M14	UK 209	3,200	1,850	H 309	2.3
UKP 210	45	57.2	206	159	60	20	22	19	113	42	119	100	M16	UK 210	3,510	2,100	H 310	3.0
UKP 211	50	63.5	219	171	60	20	22	19	125	45	130	100	M16	UK 211	4,330	2,660	H 311	3.7
UKP 212	55	69.8	241	184	70	20	25	22	138	47	143	115	M16	UK 212	5,240	3,300	H 312	4.8
UKP 213	60	76.2	265	203	70	25	30	25	150	50	155	120	M20	UK 213	5,720	3,650	H 313	5.8
UKP 215	65	82.6	275	217	74	25	30	28	162	55	168	135	M20	UK 215	6,740	4,400	H 315	7.5
UKP 216	70	88.9	292	232	78	25	35	32	174	59	181	145	M20	UK 216	7,260	4,750	H 316	9.2
UKP 217	75	95.2	310	247	83	25	40	32	185	63	191	155	M20	UK 217	8,390	5,600	H 317	11.0
UKP 218	80	101.6	327	262	88	27	45	34	198	65	204	165	M20	UK 218	9,600	6,450	H 318	13.8



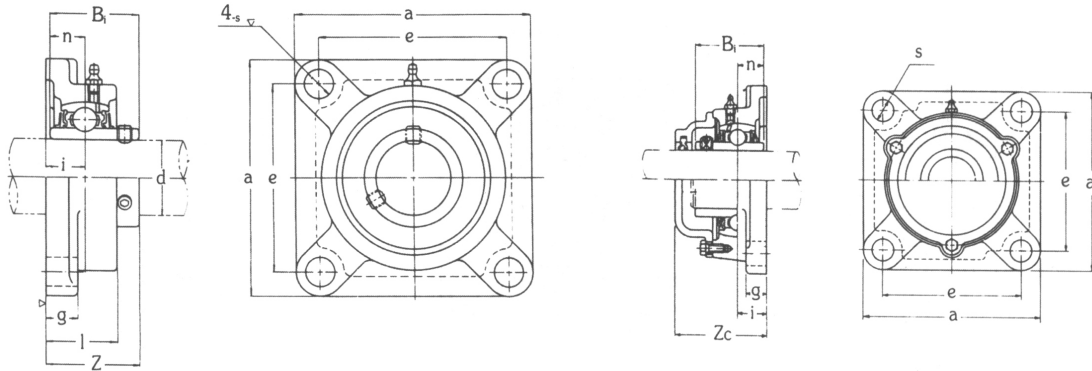
유 니 트 호칭번호	축지름	주 요 치 수 (mm)											설치 볼트 호칭	베 어 링			하우징의 호칭번호	적 용 어댑터	중량 (kgf)
	d													호칭번호	기본정격하중				
															C(kgf)	Co(kgf)			
(mm)	h	a	e	b	s ₁	s ₂	g	w	L	Wc	Zc	UK 305	2,100	1,090	P 305	H 2305	1.7		
UKP 306	25	50	180	140	50	17	20	17	95	38	105	85	M14	UK 306	2,660	1,440	P 306	H 2306	2.3
UKP 307	30	56	210	160	56	17	25	19	107	43	115	95	M14	UK 307	3,330	1,840	P 307	H 2307	3.0
UKP 308	35	60	220	170	60	17	27	19	118	46	125	105	M14	UK 308	4,070	2,300	P 308	H 2308	3.8
UKP 309	40	67	245	190	67	20	30	21	132	50	140	110	M16	UK 309	4,890	2,950	P 309	H 2309	5.0
UKP 310	45	75	275	212	75	20	35	24	148	55	156	120	M16	UK 310	6,200	3,650	P 310	H 2310	6.7
UKP 311	50	80	310	236	80	20	38	27	158	59	166	125	M16	UK 311	7,160	4,300	P 311	H 2311	8.1
UKP 312	55	85	330	250	85	25	38	29	167	62	179	135	M20	UK 312	8,180	5,000	P 312	H 2312	9.4
UKP 313	60	90	340	260	90	25	38	32	176	65	190	140	M20	UK 313	9,270	5,750	P 313	H 2313	10.8
UKP 315	65	100	380	290	100	27	40	35	198	73	210	150	M22	UK 315	11,300	7,400	P 315	H 2315	14.9
UKP 316	70	106	400	300	110	27	40	35	209	78	221	155	M22	UK 316	12,300	8,250	P 316	H 2316	18.6
UKP 317	75	112	420	320	110	33	45	40	220	82	235	170	M27	UK 317	13,300	9,200	P 317	H 2317	20.2
UKP 318	80	118	430	330	110	33	45	40	234	86	246	170	M27	UK 318	14,300	10,200	P 318	H 2318	22.8
UKP 319	85	125	470	360	120	36	50	46	248	90	258	180	M30	UK 319	15,300	11,300	P 319	H 2319	29.3
UKP 320	90	140	490	380	120	36	50	46	273	97	283	190	M30	UK 320	17,300	13,500	P 320	H 2320	34.8
UKP 322	100	150	520	400	140	40	55	50	296	105	313	200	M33	UK 322	20,500	17,200	P 322	H 2322	43.9
UKP 324	110	160	570	450	140	40	55	50	316	112	335	215	M33	UK 324	20,700	17,400	P 324	H 2324	55.7
UKP 326	115	180	600	480	140	40	55	50	355	121	375	225	M33	UK 326	22,900	20,200	P 326	H 2326	71.9
UKP 328	125	200	620	500	140	40	55	60	393	131	407	235	M33	UK 328	25,300	23,200	P 328	H 2328	92.5

주철 커버 부착



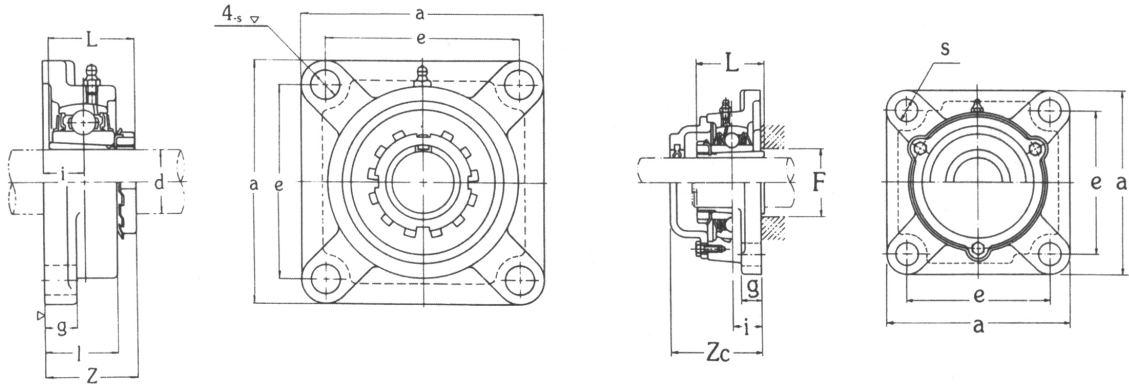
유 니 트 호칭번호	축지름	주 요 치 수 (mm)										설치 볼트 호칭	베 어 링			하우징의 호칭번호	중량 (kgf)
	d												호칭번호	기본정격하중			
	(mm)	a	e	i	g	l	s	Z	B ₁	n	Zc			C(kgf)	Co(kgf)		
UCF 201	12	86	64	15	11	25.5	12	33.3	31	12.7	-	M10	UC 201	1,280	650	F 204	0.64
UCF 202	15	86	64	15	11	25.5	12	33.3	31	12.7	-	M10	UC 202	1,280	650	F 204	0.62
UCF 203	17	86	64	15	11	25.5	12	33.3	31	12.7	-	M10	UC 203	1,280	650	F 204	0.61
UCF 204	20	86	64	15	11	25.5	12	33.3	31	12.7	46	M10	UC 204	1,280	650	F 204	0.59
UCF 205	25	95	70	16	13	27	12	35.7	34	14.3	51	M10	UC 205	1,400	730	F 205	0.83
UCF 206	30	108	83	18	13	31	12	40.2	38.1	15.9	56	M10	UC 206	1,950	1,050	F 206	1.1
UCF 207	35	117	92	19	15	34	14	44.4	42.9	17.5	59	M12	UC 207	2,570	1,430	F 207	1.5
UCF 208	40	130	102	21	15	36	16	51.2	49.2	19	66	M14	UC 208	2,910	1,650	F 208	1.9
UCF 209	45	137	105	22	16	38	16	52.2	49.2	19	70	M14	UC 209	3,200	1,850	F 209	2.2
UCF 210	50	143	111	22	16	40	16	54.6	51.6	19	72	M14	UC 210	3,510	2,100	F 210	2.5
UCF 211	55	162	130	25	18	43	19	58.4	55.6	22.2	75	M16	UC 211	4,330	2,660	F 211	3.4
UCF 212	60	175	143	29	18	48	19	68.7	65.1	25.4	86	M16	UC 212	5,240	3,300	F 212	4.2
UCF 213	65	187	149	30	22	50	19	69.7	65.1	25.4	90	M16	UC 213	5,720	3,650	F 213	5.2
UCF 214	70	193	152	31	22	54	19	75.4	74.6	30.2	98	M16	UC 214	6,220	4,000	F 214	5.9
UCF 215	75	200	159	34	22	56	19	78.5	77.8	33.3	102	M16	UC 215	6,740	4,400	F 215	6.4
UCF 216	80	208	165	34	22	58	23	83.3	82.6	33.3	106	M20	UC 216	7,260	4,750	F 216	7.3
UCF 217	85	220	175	36	24	63	23	87.6	85.7	34.1	114	M20	UC 217	8,390	5,600	F 217	8.9
UCF 218	90	235	187	40	25	68	23	96.3	96	39.7	122	M20	UC 218	9,600	6,450	F 218	11.4

주철 커버 부착



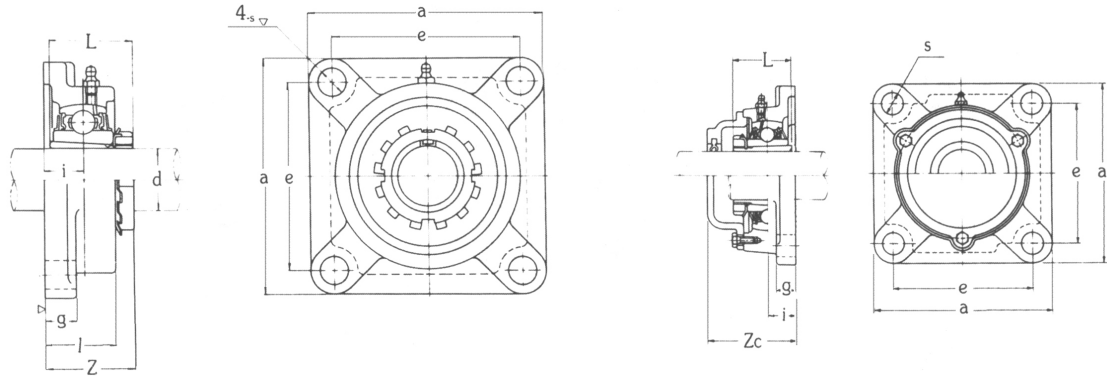
유 니 트 호칭번호	축지름	주 요 치 수 (mm)										설치 볼트 호칭	베 어 링			하우징의 호칭번호	중량 (kgf)
	d												호칭번호	기본정격하중			
	(mm)	a	e	i	g	l	s	Z	B ₁	n	Zc			C(kgf)	Co(kgf)		
UCF 305	25	110	80	16	13	29	16	39	38	15	56	M14	UC 305	2,100	1,090	F 305	1.3
UCF 306	30	125	95	18	15	32	16	44	43	17	60	M14	UC 306	2,660	1,440	F 306	1.9
UCF 307	35	135	100	20	16	36	19	49	48	19	68	M16	UC 307	3,330	1,840	F 307	2.3
UCF 308	40	150	112	23	17	40	19	56	52	19	76	M16	UC 308	4,070	2,300	F 308	3.1
UCF 309	45	160	125	25	18	44	19	60	57	22	80	M16	UC 309	4,890	2,950	F 309	4.0
UCF 310	50	175	132	28	19	48	23	67	61	22	88	M20	UC 310	6,200	3,650	F 310	5.1
UCF 311	55	185	140	30	20	52	23	71	66	25	92	M20	UC 311	7,160	4,300	F 311	5.6
UCF 312	60	195	150	33	22	56	23	78	71	26	100	M20	UC 312	8,180	5,000	F 312	6.9
UCF 313	65	208	166	33	22	58	23	78	75	30	103	M20	UC 313	9,270	5,750	F 313	7.8
UCF 314	70	226	178	36	25	61	25	81	78	33	106	M22	UC 314	10,400	6,550	F 314	10.1
UCF 315	75	236	184	39	25	66	25	89	82	32	114	M22	UC 315	11,300	7,400	F 315	11.6
UCF 316	80	250	196	38	27	68	31	90	86	34	116	M27	UC 316	12,300	8,250	F 316	12.8
UCF 317	85	260	204	44	27	74	31	100	96	40	129	M27	UC 317	13,300	9,200	F 317	15.3
UCF 318	90	280	216	44	30	76	35	100	96	40	129	M30	UC 318	14,300	10,200	F 318	18.9
UCF 319	95	290	228	59	30	94	35	121	103	41	149	M30	UC 319	15,300	11,300	F 319	21.6
UCF 320	100	310	242	59	32	94	38	125	108	42	154	M33	UC 320	17,300	13,500	F 320	25.8
UCF 321	105	310	242	59	32	94	38	127	112	44	156	M33	UC 321	18,400	14,700	F 321	30.2
UCF 322	110	340	266	60	35	96	41	131	117	46	160	M36	UC 322	20,500	17,200	F 322	35.3
UCF 324	120	370	290	65	40	110	41	140	126	51	172	M36	UC 324	20,700	17,400	F 324	47.3
UCF 326	130	410	320	65	45	115	41	146	135	54	178	M36	UC 326	22,900	20,200	F 326	65.5
UCF 328	140	450	350	75	55	125	41	161	145	59	192	M36	UC 328	25,300	23,200	F 328	93.4

주철 커버 부착

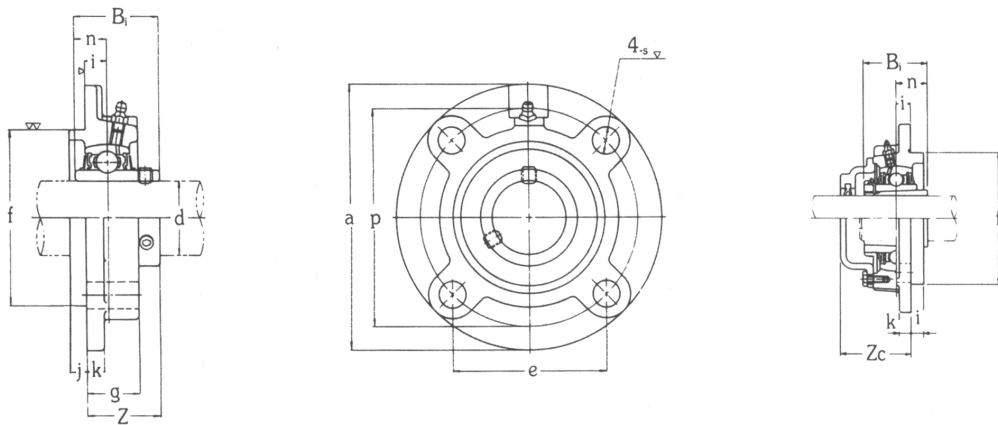


유 니 트 호칭번호	축지름	주 요 치 수 (mm)									설치 볼트 호칭	베 어 링			하우징의 호칭번호	적 용 어댑터	중량 (kgf)
	d											호칭번호	기본정격하중				
(mm)	a	e	i	g	l	s	Z	L	Zc	UK 205	1,400	730	F 205	H 2305	0.87		
UKF 206	25	108	83	18	13	31	12	37.5	31	56	M10	UK 206	1,950	1,050	F 206	H 2306	1.3
UKF 207	30	117	92	19	15	34	14	41	35	59	M12	UK 207	2,570	1,430	F 207	H 2307	1.6
UKF 208	35	130	102	21	15	36	16	44.5	36	66	M14	UK 208	2,910	1,650	F 208	H 2308	1.9
UKF 209	40	137	105	22	16	38	16	47	39	70	M14	UK 209	3,200	1,850	F 209	H 2309	2.3
UKF 210	45	143	111	22	16	40	16	48.5	42	72	M14	UK 210	3,510	2,100	F 210	H 2310	2.6
UKF 211	50	162	130	25	18	43	19	52.5	45	75	M16	UK 211	4,330	2,660	F 211	H 2311	3.5
UKF 212	55	175	143	29	18	48	19	58.5	47	86	M16	UK 212	5,240	3,300	F 212	H 2312	4.1
UKF 213	60	187	149	30	22	50	19	62	50	90	M16	UK 213	5,720	3,650	F 213	H 2313	5.1
UKF 215	65	200	159	34	22	56	19	69	55	102	M16	UK 215	6,740	4,400	F 215	H 2315	6.5
UKF 216	70	208	165	34	22	58	23	72	59	106	M20	UK 216	7,260	4,750	F 216	H 2316	7.6
UKF 217	75	220	175	36	24	63	23	76	63	114	M20	UK 217	8,390	5,600	F 217	H 2317	9.0
UKF 218	80	235	187	40	25	68	23	82	65	122	M20	UK 218	9,600	6,450	F 218	H 2318	11.4

주철 커버 부착

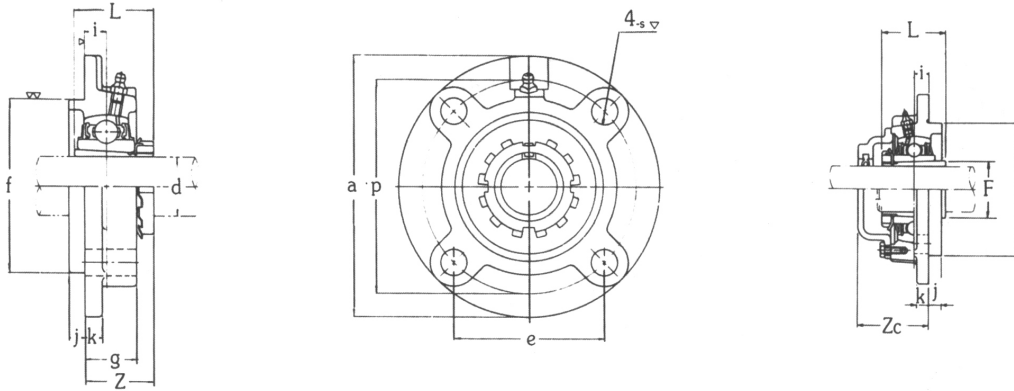


유 니 트 호칭번호	축지름	주 요 치 수 (mm)									설치 볼트 호칭	베 어 링			하우징의 호칭번호	적 용 어댑터	중량 (kgf)
	d											호칭번호	기본정격하중				
	(mm)	a	e	i	g	l	s	Z	L	Zc			C(kgf)	Co(kgf)			
UKF 305	20	110	80	16	13	29	16	37.5	35	56	M14	UK 305	2,100	1,090	F 305	H 2305	1.4
UKF 306	25	125	95	18	15	32	16	41	38	60	M14	UK 306	2,660	1,440	F 306	H 2306	1.9
UKF 307	30	135	100	20	16	36	19	45.5	43	68	M16	UK 307	3,330	1,840	F 307	H 2307	2.3
UKF 308	35	150	112	23	17	40	19	50.5	46	76	M16	UK 308	4,070	2,300	F 308	H 2308	3.1
UKF 309	40	160	125	25	18	44	19	55	50	80	M16	UK 309	4,890	2,950	F 309	H 2309	4.1
UKF 310	45	175	132	28	19	48	23	60	55	88	M20	UK 310	6,200	3,650	F 310	H 2310	5.1
UKF 311	50	185	140	30	20	52	23	63.5	59	92	M20	UK 311	7,160	4,300	F 311	H 2311	5.9
UKF 312	55	195	150	33	22	56	23	69.5	62	100	M20	UK 312	8,180	5,000	F 312	H 2312	6.8
UKF 313	60	208	166	33	22	58	23	71.5	65	103	M20	UK 313	9,270	5,750	F 313	H 2313	7.9
UKF 315	65	236	184	39	25	66	25	81.5	73	114	M22	UK 315	11,300	7,400	F 315	H 2315	11.7
UKF 316	70	250	196	38	27	68	31	82.5	78	116	M27	UK 316	12,300	8,250	F 316	H 2316	12.9
UKF 317	75	260	204	44	27	74	31	92	82	129	M27	UK 317	13,300	9,200	F 317	H 2317	15.2
UKF 318	80	280	216	44	30	76	35	92	86	129	M30	UK 318	14,300	10,200	F 318	H 2318	19.0
UKF 319	85	290	228	59	30	94	35	111	90	149	M30	UK 319	15,300	11,300	F 319	H 2319	21.9
UKF 320	90	310	242	59	32	94	38	113	97	154	M33	UK 320	17,300	13,500	F 320	H 2320	25.4
UKF 322	100	340	266	60	35	96	41	120	105	160	M36	UK 322	20,500	17,200	F 322	H 2322	35.2
UKF 324	110	370	290	65	40	100	41	130.5	112	172	M36	UK 324	20,700	17,400	F 324	H 2324	47.6
UKF 326	115	410	320	65	45	115	41	131.5	121	178	M36	UK 326	22,900	20,200	F 326	H 2326	65.3
UKF 328	125	450	350	75	55	125	41	147.5	131	192	M36	UK 328	25,300	23,200	F 328	H 2328	93.4

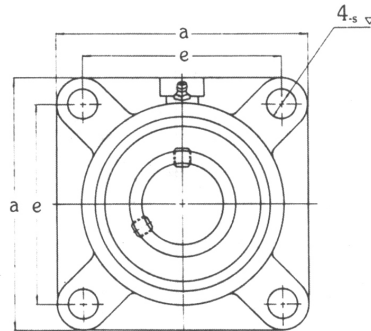
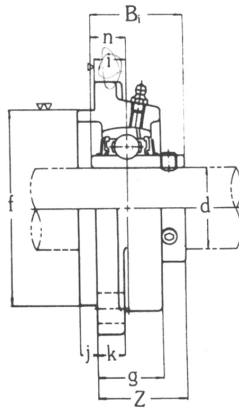


유 니 트 호칭번호	축지름	주 요 치 수 (mm)													설치 볼트 호칭	베 어 링			하우징의 호칭번호	중량 (kgf)
	d (mm)	a	p	e	i	s	j	k	g	f	Z	B ₁	n	Zc		호칭번호	기본정격하중			
																	C(kgf)	Co(kgf)		
UCFC 201	12	100	78	55.1	10	12	5	7	20.5	62	28.3	31	12.7	-	M10	UC 201	1,280	650	FC 204	0.78
UCFC 202	15	100	78	55.1	10	12	5	7	20.5	62	28.3	31	12.7	-	M10	UC 202	1,280	650	FC 204	0.76
UCFC 203	17	100	78	55.1	10	12	5	7	20.5	62	28.3	31	12.7	-	M10	UC 203	1,250	650	FC 204	0.75
UCFC 204	20	100	78	55.1	10	12	5	7	20.5	62	28.3	31	12.7	41	M10	UC 204	1,280	650	FC 204	0.73
UCFC 205	25	115	90	63.6	10	12	6	7	21	70	29.7	34	14.3	45	M10	UC 205	1,400	730	FC 205	0.95
UCFC 206	30	125	100	70.7	10	12	8	8	23	80	32.3	38.1	15.9	48	M10	UC 206	1,950	1,050	FC 206	1.3
UCFC 207	35	135	110	77.8	11	14	8	9	26	90	36.4	42.9	17.5	51	M12	UC 207	2,570	1,430	FC 207	1.7
UCFC 208	40	145	120	84.8	11	14	10	9	26	100	41.2	49.2	19	56	M12	UC 208	2,910	1,650	FC 208	2.0
UCFC 209	45	160	132	93.3	10	16	12	14	26	105	40.2	49.2	19	58	M14	UC 209	3,200	1,850	FC 209	2.6
UCFC 210	50	165	138	97.6	10	16	12	14	28	110	42.6	51.6	19	60	M14	UC 210	3,510	2,100	FC 210	2.9
UCFC 211	55	185	150	106.1	13	19	12	15	31	125	46.4	55.6	22.2	63	M16	UC 211	4,330	2,660	FC 211	4.2
UCFC 212	60	195	160	113.1	17	19	12	15	36	135	56.7	65.1	25.4	74	M16	UC 212	5,240	3,300	FC 212	5.0
UCFC 213	65	205	170	120.2	16	19	14	15	36	145	55.7	65.1	25.4	76	M16	UC 213	5,720	3,650	FC 213	5.6
UCFC 214	70	215	177	125.1	17	19	14	18	40	150	61.4	74.6	30.2	84	M16	UC 214	6,550	4,000	FC 214	6.8
UCFC 215	75	220	184	130.1	18	19	16	18	40	160	62.5	77.8	33.3	86	M16	UC 215	6,740	4,400	FC 215	7.2
UCFC 216	80	240	200	141.1	18	23	16	18	42	170	67.3	82.6	33.3	90	M20	UC 216	7,260	4,750	FC 216	8.7
UCFC 217	85	250	208	147.1	18	23	18	20	45	180	69.6	85.7	34.1	96	M20	UC 217	8,390	5,600	FC 217	10.3
UCFC 218	90	265	220	155.5	22	23	18	20	50	190	78.3	96	39.7	104	M20	UC 218	9,600	6,450	FC 218	13.3

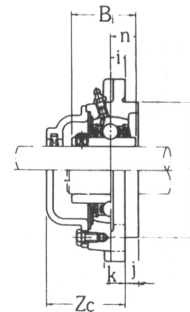
주철 커버 부착



유 니 트 호칭번호	축지름	주 요 치 수 (mm)												설치 볼트 호칭	베 어 링			하우징의 호칭번호	적 용 어댑터	중량 (kgf)
	d														호칭번호	기본정격하중				
		(mm)	a	p	e	i	s	j	k	g	f	Z	L			Zc				
UKFC 205	20	115	90	63.6	10	12	6	7	21	70	28.5	29	45	M10	UK 205	1,400	730	FC 205	H 2305	0.99
UKFC 206	25	125	100	70.7	10	12	8	8	23	80	29.5	31	48	M10	UK 206	1,950	1,050	FC 206	H 2306	1.3
UKFC 207	30	135	110	77.8	11	14	8	9	26	90	33	35	51	M12	UK 207	2,570	1,430	FC 207	H 2307	1.7
UKFC 208	35	145	120	84.8	11	14	10	9	26	100	34.5	36	56	M12	UK 208	2,910	1,650	FC 208	H 2308	2.0
UKFC 209	40	160	132	93.3	10	16	12	14	26	105	35	39	58	M14	UK 209	3,200	1,850	FC 209	H 2309	2.7
UKFC 210	45	165	138	97.6	10	16	12	14	28	110	36.5	42	60	M14	UK 210	3,510	2,100	FC 210	H 2310	3.0
UKFC 211	50	185	150	106.1	13	19	12	15	31	125	40.5	45	63	M16	UK 211	4,330	2,660	FC 211	H 2311	4.3
UKFC 212	55	195	160	113.1	17	19	12	15	36	135	46.5	47	74	M16	UK 212	5,240	3,300	FC 212	H 2312	4.9
UKFC 213	60	205	170	120.2	16	19	14	15	36	145	48	50	76	M16	UK 213	5,720	3,650	FC 213	H 2313	5.5
UKFC 215	65	220	184	130.1	18	19	16	18	40	160	53	55	86	M16	UK 215	6,740	4,400	FC 215	H 2315	7.4
UKFC 216	70	240	200	141.4	18	23	16	18	42	170	56	59	90	M20	UK 216	7,260	4,750	FC 216	H 2316	9.0
UKFC 217	75	250	208	147.1	18	23	18	20	45	180	58	63	96	M20	UK 217	8,390	5,600	FC 217	H 2317	10.4
UKFC 218	80	265	220	155.5	22	23	18	20	50	190	64	65	104	M20	UK 218	9,600	6,450	FC 218	H 2318	13.3

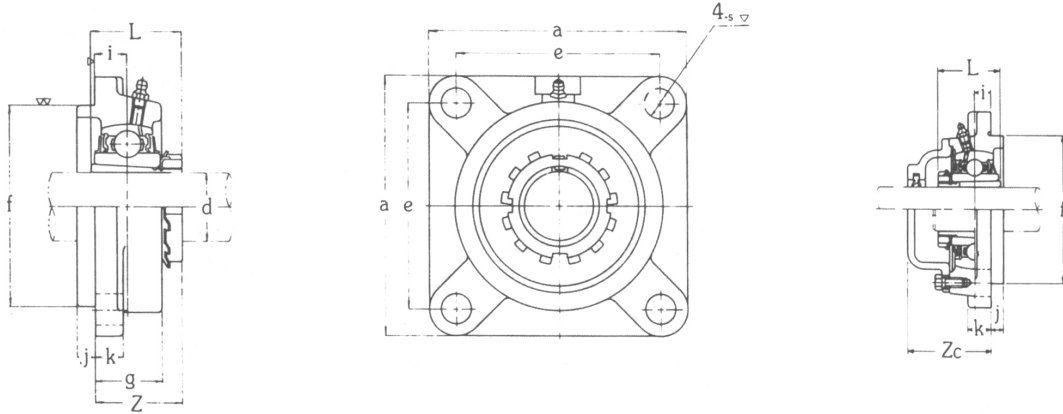


주철 커버 부착

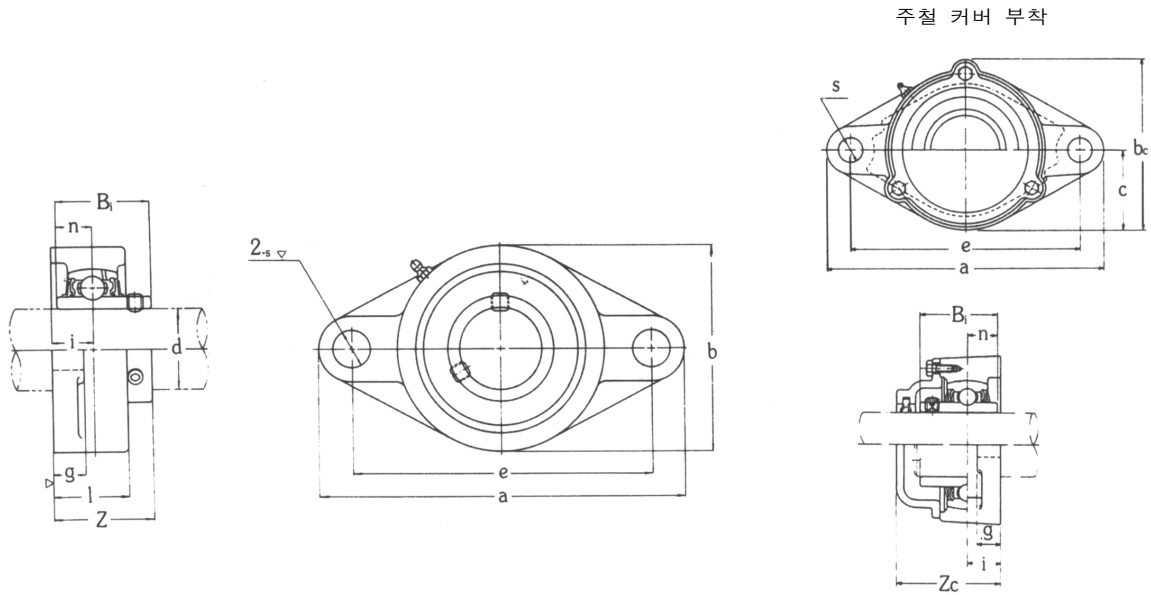


유 니 트 호칭번호	축지름	주 요 치 수 (mm)												설치 볼트 호칭	배 어 링			하우징의 호칭번호	중량 (kgf)
	d (mm)	a	e	i	s	j	k	g	f	Z	B ₁	n	Zc		호칭번호	기본정격하중			
															C(kgf)	Co(kgf)			
UCFS 305	25	110	80	9	16	7	13	22	80	32	38	15	49	M14	UC 305	2,100	1,090	FS 305	1.4
UCFS 305	30	125	95	10	16	8	15	24	90	36	43	17	52	M14	UC 306	2,660	1,440	FS 306	1.9
UCFS 307	35	135	100	11	19	9	16	27	100	40	48	19	58	M16	UC 307	3,330	1,840	FS 307	2.3
UCFS 308	40	150	112	13	19	10	17	30	115	46	52	19	66	M16	UC 308	4,070	2,300	FS 308	3.4
UCFS 309	45	160	125	14	19	11	18	33	125	49	57	22	69	M16	UC 309	4,890	2,950	FS 309	4.4
UCFS 310	50	175	132	16	23	12	19	36	140	55	61	22	76	M20	UC 310	6,200	3,650	FS 310	5.3
UCFS 311	55	185	140	17	23	13	20	39	150	58	66	25	80	M20	UC 311	7,160	4,300	FS 311	6.1
UCFS 312	60	195	150	19	23	14	22	42	160	64	71	26	86	M20	UC 312	8,180	5,000	FS 312	7.4
UCFS 313	65	208	166	15	23	18	22	40	175	60	75	30	85	M20	UC 313	9,270	5,750	FS 313	8.8
UCFS 314	70	226	178	18	25	18	25	43	185	63	78	33	88	M22	UC 314	10,400	6,550	FS 314	11.2
UCFS 315	75	236	184	21	25	18	25	48	200	71	82	32	96	M22	UC 315	11,300	7,400	FS 315	13.7
UCFS 316	80	250	196	18	31	20	27	48	210	70	86	34	96	M27	UC 316	12,300	8,250	FS 316	15.1
UCFS 317	85	260	204	24	31	20	27	54	220	80	96	40	109	M27	UC 317	13,300	9,200	FS 317	17.3
UCFS 318	90	280	216	24	35	20	30	56	240	80	96	40	109	M30	UC 318	14,300	10,200	FS 318	21.3
UCFS 319	95	290	228	39	35	20	30	74	250	101	103	41	129	M30	UC 319	15,300	11,300	FS 319	24.5
UCFS 320	100	310	242	39	38	20	32	74	260	105	108	42	134	M33	UC 320	17,300	13,500	FS 320	29.5
UCFS 321	105	310	242	39	38	20	32	74	260	107	112	44	136	M33	UC 321	18,400	14,700	FS 321	32.7
UCFS 322	110	340	266	35	41	25	35	71	300	106	117	46	135	M36	UC 322	20,500	17,200	FS 322	39.0
UCFS 324	120	370	290	35	41	30	40	80	330	110	126	51	142	M36	UC 324	20,700	17,400	FS 324	50.6
UCFS 326	130	410	320	35	41	30	45	85	360	116	135	54	148	M36	UC 326	22,900	20,200	FS 326	67.7
UCFS 328	140	450	350	45	41	30	55	95	400	131	145	59	162	M36	UC 328	25,300	23,200	FS 328	94.0

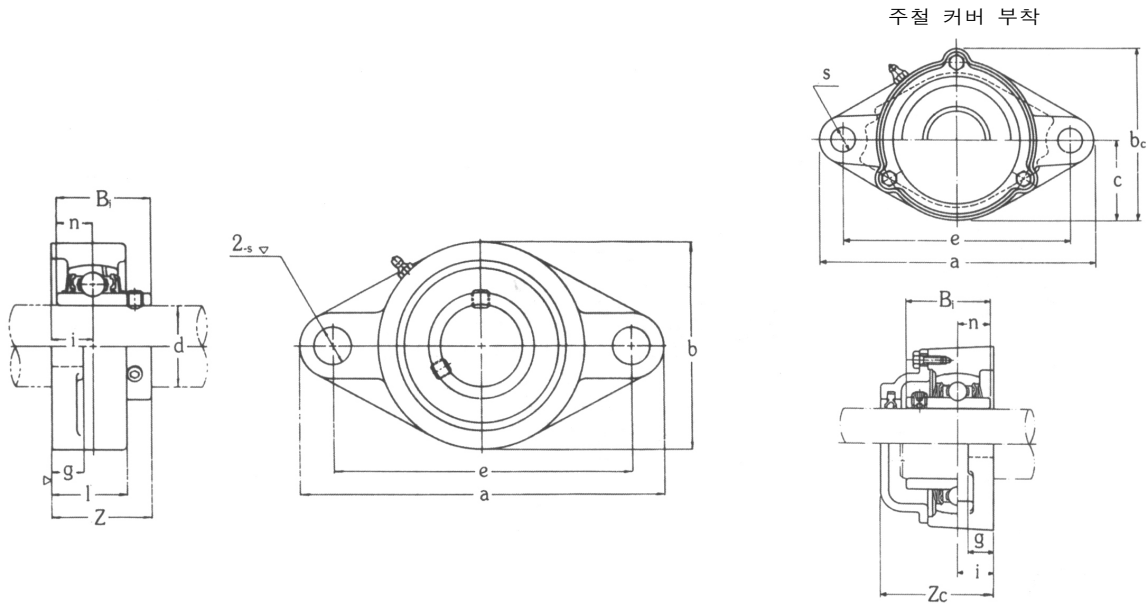
주철 커버 부착



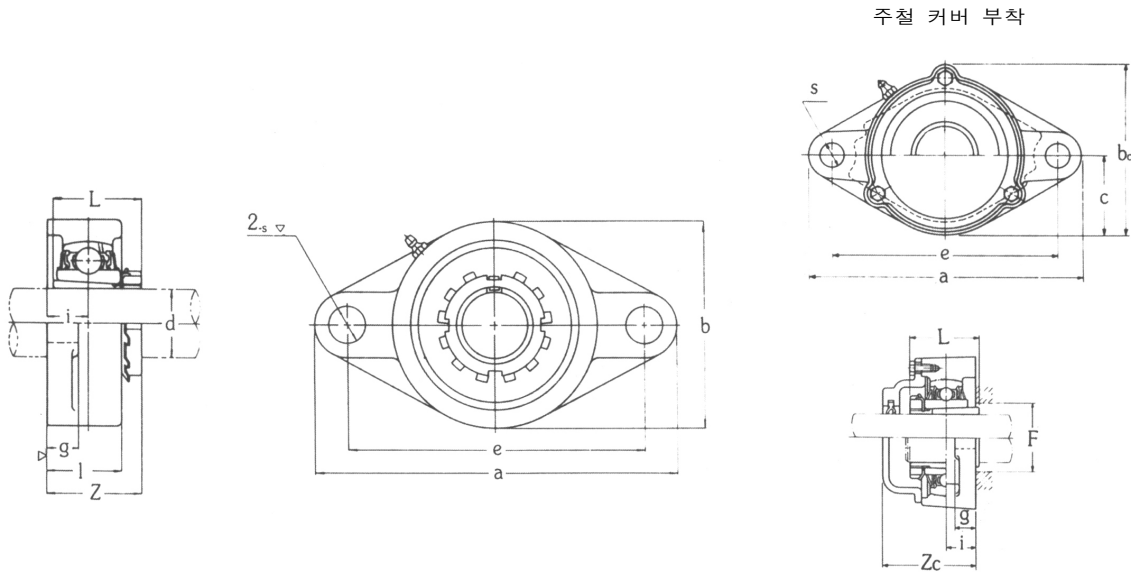
유 니 트 호칭번호	축지름	주 요 치 수 (mm)											설치 볼트 호칭	베 어 링			하우징의 호칭번호	적 용 어댑터	중량 (kgf)
	d													호칭번호	기본정격하중				
															C(kgf)	Co(kgf)			
(mm)	a	e	i	s	j	k	g	f	Z	L	Zc								
UKFS 305	20	110	80	9	16	7	13	22	80	30.5	35	49	M14	UK 305	2,100	1,090	FS 305	H 2305	1.4
UKFS 306	25	125	95	10	16	8	15	24	90	33	38	52	M14	UK 306	2,660	1,440	FS 306	H 2306	1.9
UKFS 307	30	135	100	11	19	9	16	27	100	36.5	43	58	M16	UK 307	3,330	1,840	FS 307	H 2307	2.4
UKFS 308	35	150	112	13	19	10	17	30	115	40.5	46	66	M16	UK 308	4,070	2,300	FS 308	H 2308	3.4
	40	160	125	14	19	11	18	33	125	44	50	69	M16	UK 309	4,890	2,950	FS 309	H 2309	4.4
	45	175	132	16	23	12	19	36	140	48	55	76	M20	UK 310	6,200	3,650	FS 310	H 2310	5.3
UKFS 311	50	185	140	17	23	13	20	39	150	50.5	59	80	M20	UK 311	7,160	4,300	FS 311	H 2311	6.3
UKFS 312	55	195	150	19	23	14	22	42	160	55.5	62	86	M20	UK 312	8,180	5,000	FS 312	H 2312	7.3
UKFS 313	60	208	166	15	23	18	22	40	175	53.5	65	85	M20	UK 313	9,270	5,750	FS 313	H 2313	8.9
UKFS 315	65	236	184	21	25	18	25	48	200	63.5	73	96	M22	UK 315	11,300	7,400	FS 315	H 2315	13.4
	70	250	196	18	31	20	27	48	210	62.5	78	96	M27	UK 316	12,300	8,250	FS 316	H 2316	15.1
UKFS 317	75	260	204	24	31	20	27	54	220	72	82	109	M27	UK 317	13,300	9,200	FS 317	H 2317	17.1
	80	280	216	24	35	20	30	56	240	72	86	109	M30	UK 318	14,300	10,200	FS 318	H 2318	21.4
	85	290	228	39	35	20	30	74	250	91	90	129	M30	UK 319	15,300	11,300	FS 319	H 2319	24.8
UKFS 320	90	310	242	39	38	20	32	74	260	93	97	134	M33	UK 320	17,300	13,500	FS 320	H 2320	29.1
UKFS 322	100	340	266	35	41	25	35	71	300	95	105	135	M36	UK 322	20,500	17,200	FS 322	H 2322	38.6
UKFS 324	110	370	290	35	41	30	40	80	330	100.5	112	142	M36	UK 324	20,700	17,400	FS 324	H 2324	50.9
UKFS 326	115	410	320	35	41	30	45	85	360	101.5	121	148	M36	UK 326	22,900	20,200	FS 326	H 2326	67.5
UKFS 328	125	450	350	45	41	30	55	95	400	117.5	131	162	M36	UK 328	25,300	23,200	FS 328	H 2328	94.0



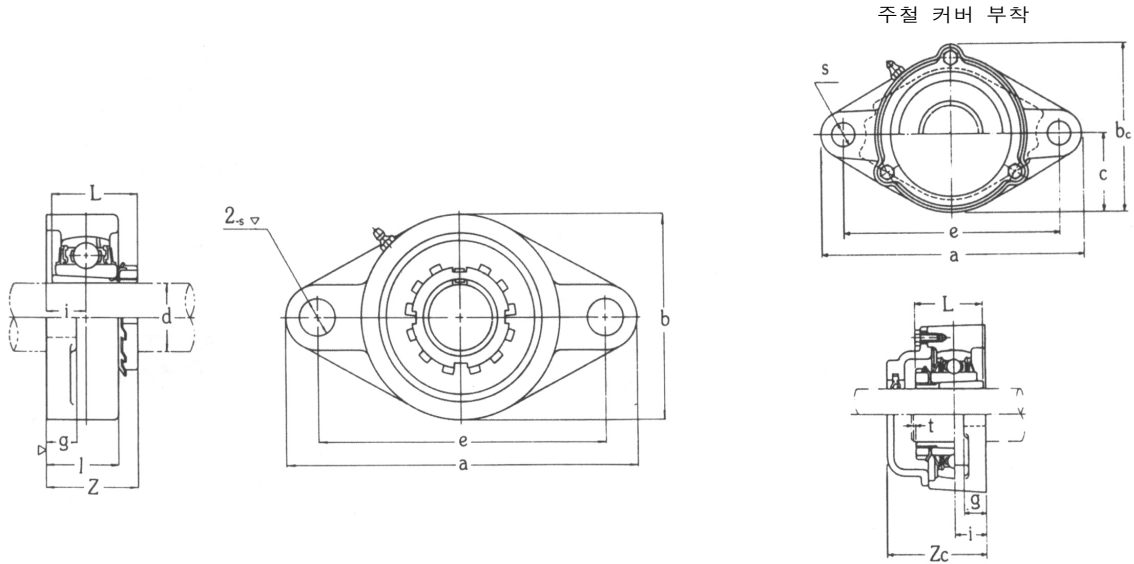
유 니 트 호칭번호	축지름		주 요 치 수 (mm)													설치 볼트 호칭	배 어 링			하우징의 호칭번호	중량 (kgf)
	d (mm)	a	e	i	g	l	s	b	Z	B ₁	n	Zc	bc	C	호칭번호		기본정격하중				
																	C(kgf)	Co(kgf)			
UCFL 201	12	113	90	15	11	25.5	12	60	33.3	31	12.7	-	-	-	M10	UC 201	1,280	650	FL 204	0.50	
UCFL 202	15	113	90	15	11	25.5	12	60	33.3	31	12.7	-	-	-	M10	UC 202	1,280	650	FL 204	0.48	
UCFL 203	17	113	90	15	11	25.5	12	60	33.3	31	12.7	-	-	-	M10	UC 203	1,280	650	FL 204	0.47	
UCFL 204	20	113	90	15	11	25.5	12	60	33.3	31	12.7	46	67	30	M10	UC 204	1,280	650	FL 204	0.45	
UCFL 205	25	130	99	16	13	27	16	68	35.7	34	14.3	51	74	34	M14	UC 205	1,400	730	FL 205	0.64	
UCFL 206	30	148	117	18	13	31	16	80	40.2	38.1	15.9	56	85	40	M14	UC 206	1,950	1,050	FL 206	0.93	
UCFL 207	35	161	130	19	14	34	16	90	44.4	42.9	17.5	59	97	45	M14	UC 207	2,570	1,430	FL 207	1.2	
UCFL 208	40	175	144	21	14	36	16	100	51.2	49.2	19	66	106	50	M14	UC 208	2,910	1,650	FL 208	1.6	
UCFL 209	45	188	148	22	15	38	19	108	52.2	49.2	19	70	113	54	M16	UC 209	3,200	1,850	FL 209	1.9	
UCFL 210	50	197	157	22	15	40	19	115	54.6	51.6	19	72	120	58	M16	UC 210	3,510	2,100	FL 210	2.2	
UCFL 211	55	224	184	25	18	43	19	130	58.4	55.6	22.2	75	133	65	M16	UC 211	4,330	2,660	FL 211	3.3	
UCFL 212	60	250	202	29	18	48	23	140	68.7	65.1	25.4	86	144	70	M20	UC 212	5,240	3,300	FL 212	4.2	
UCFL 213	65	258	210	30	20	50	23	155	69.7	65.1	25.4	90	157	78	M20	UC 213	5,720	3,650	FL 213	5.1	
UCFL 214	70	265	216	31	20	54	23	160	75.4	74.6	30.2	98	164	80	M20	UC 214	6,220	4,000	FL 214	5.7	
UCFL 215	75	275	225	34	20	56	23	165	78.5	77.8	33.3	102	169	82	M20	UC 215	6,740	4,400	FL 215	6.4	
UCFL 216	80	290	233	34	20	58	25	180	83.3	82.6	33.3	106	183	90	M22	UC 216	7,260	4,750	FL 216	7.8	
UCFL 217	85	302	248	36	22	63	25	190	87.6	85.7	34.1	114	192	95	M22	UC 217	8,390	5,600	FL 217	9.8	
UCFL 218	90	320	265	40	23	68	25	205	96.3	96	39.7	122	205	102	M22	UC 218	9,600	6,450	FL 218	12.3	



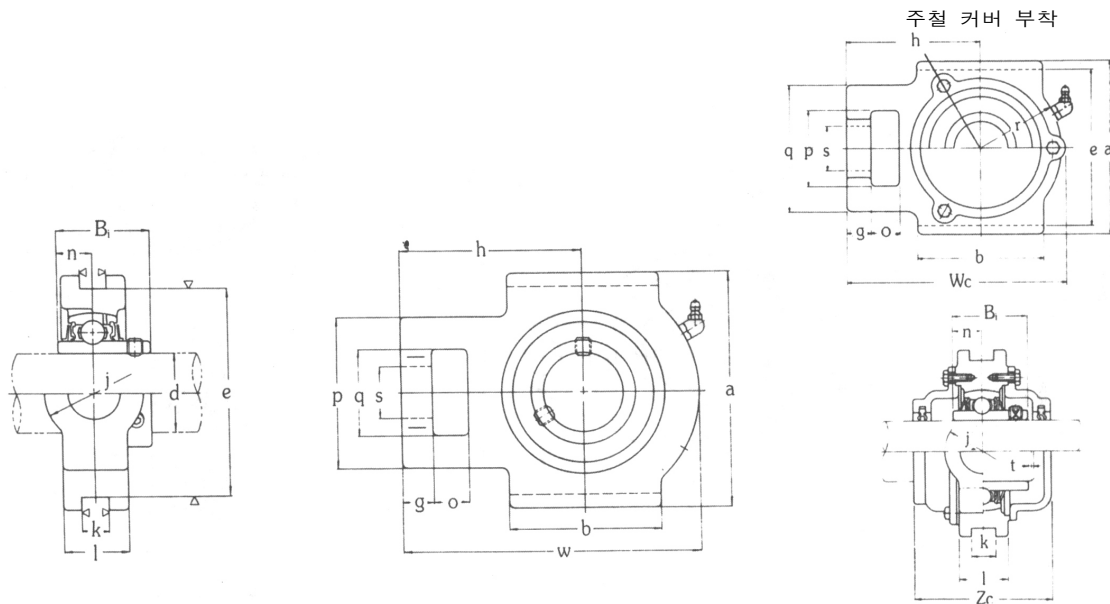
유 니 트 호칭번호	축지름		주 요 치 수 (mm)													설치 볼트 호칭	베 어 링			하우징의 호칭번호	중량 (kgf)
	d	(mm)															호칭번호		기본정격하중		
			a	e	i	g	l	s	b	Z	B ₁	n	Zc	bc	C		C(kgf)	Co(kgf)			
UCFL 305	25	150	113	16	13	29	19	80	39	38	15	56	86	40	M16	UC 305	2,100	1,090	FL 305	1.1	
UCFL 306	30	180	134	18	15	32	23	90	44	43	17	60	101	45	M20	UC 306	2,660	1,440	FL 306	1.5	
UCFL 307	35	185	141	20	16	36	23	100	49	48	19	68	110	50	M20	UC 307	3,330	1,840	FL 307	1.8	
UCFL 308	40	200	158	23	17	40	23	112	56	52	19	76	122	56	M20	UC 308	4,070	2,300	FL 308	2.5	
UCFL 309	45	230	177	25	18	44	25	125	60	57	22	80	135	62	M22	UC 309	4,890	2,950	FL 309	3.5	
UCFL 310	50	240	187	28	19	48	25	140	67	61	22	88	152	70	M22	UC 310	6,200	3,650	FL 310	4.4	
UCFL 311	55	250	198	30	20	52	25	150	71	66	25	92	162	75	M22	UC 311	7,160	4,300	FL 311	5.3	
UCFL 312	60	270	212	33	22	56	31	160	78	71	26	100	175	80	M27	UC 312	8,180	5,000	FL 312	6.5	
UCFL 313	65	295	240	33	25	58	31	175	78	75	30	103	189	88	M27	UC 313	9,270	5,750	FL 313	8.5	
UCFL 314	70	315	250	36	28	61	35	185	81	78	33	106	198	92	M30	UC 314	10,400	6,550	FL 314	9.7	
UCFL 315	75	320	260	39	30	66	35	195	89	82	32	114	210	98	M30	UC 315	11,300	7,400	FL 315	11.3	
UCFL 316	80	355	285	38	32	68	38	210	90	86	34	116	222	105	M33	UC 316	12,300	8,250	FL 316	14.4	
UCFL 317	85	370	300	44	32	74	38	220	100	96	40	127	234	110	M33	UC 317	13,300	9,200	FL 317	16.0	
UCFL 318	90	385	315	44	36	76	38	235	100	96	40	129	247	118	M33	UC 318	14,300	10,200	FL 318	19.0	
UCFL 319	95	405	330	59	40	94	41	250	121	103	41	149	260	125	M36	UC 319	15,300	11,300	FL 319	24.6	
UCFL 320	100	440	360	59	40	94	44	270	125	108	42	154	280	135	M39	UC 320	17,300	13,500	FL 320	29.4	
UCFL 321	105	440	360	59	40	94	44	270	127	112	44	156	287	135	M39	UC 321	18,400	14,700	FL 321	34.4	
UCFL 322	110	470	390	60	42	96	44	300	131	117	46	160	315	150	M39	UC 322	20,500	17,200	FL 322	36.2	
UCFL 324	120	520	430	65	48	110	47	330	140	126	51	172	342	165	M42	UC 324	17,400	17,400	FL 324	51.6	
UCFL 326	130	550	460	65	50	115	47	360	146	135	54	178	376	180	M42	UC 326	20,200	20,200	FL 326	61.6	
UCFL 328	140	600	500	75	60	125	51	400	161	145	59	192	410	200	M45	UC 328	23,200	23,200	FL 328	68.4	



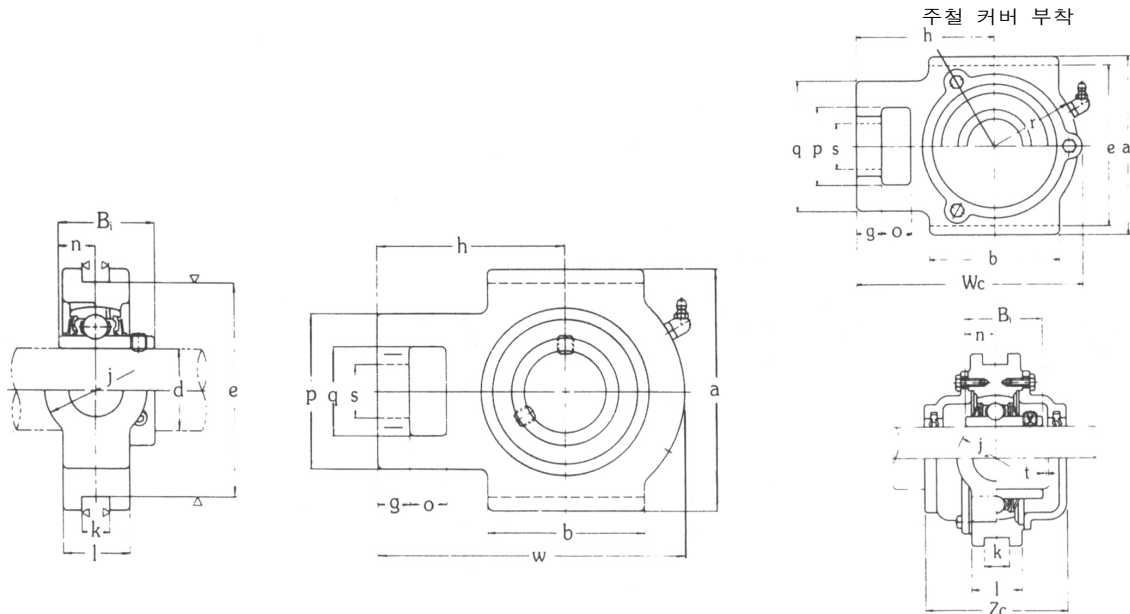
유 니 트 호칭번호	축지름	주 요 치 수 (mm)												설치 볼트 호칭	베 어 링			하우징의 호칭번호	적 용 어댑터	중량 (kgf)
	d (mm)														호칭번호	기본정격하중				
		a	e	i	g	l	s	b	Z	L	Zc	bc	C			C(kgf)	Co(kgf)			
UKFL 205	20	130	99	16	13	27	16	68	34.5	29	51	74	34	M14	UK 205	1,400	730	FL 205	H 2305	0.68
UKFL 206	25	148	117	18	13	31	16	80	37.5	31	56	85	40	M14	UK 206	1,950	1,050	FL 206	H 2306	0.97
UKFL 207	30	161	130	19	14	34	16	90	41	35	59	97	45	M14	UK 207	2,570	1,430	FL 207	H 2307	1.3
UKFL 208	35	175	144	21	14	36	16	100	44.5	36	66	106	50	M14	UK 208	2,910	1,650	FL 208	H 2308	1.6
UKFL 209	40	188	148	22	15	38	19	108	47	39	70	113	54	M16	UK 209	3,200	1,850	FL 209	H 2309	2.0
UKFL 210	45	197	157	22	15	40	19	115	48.5	42	72	120	58	M16	UK 210	3,510	2,100	FL 210	H 2310	2.3
UKFL 211	50	224	184	25	18	43	19	130	52.5	45	75	133	65	M16	UK 211	4,330	2,660	FL 211	H 2311	3.3
UKFL 212	55	250	202	29	18	48	23	140	58.5	47	86	144	70	M20	UK 212	5,240	3,300	FL 212	H 2312	4.1
UKFL 213	60	258	210	30	20	50	23	155	62	50	90	157	78	M20	UK 213	5,720	3,650	FL 213	H 2313	5.0
UKFL 215	65	275	225	34	20	56	23	165	69	55	102	169	82	M20	UK 215	6,740	4,400	FL 215	H 2315	6.6
UKFL 216	70	290	233	34	20	58	25	180	72	59	106	183	90	M22	UK 216	7,260	4,750	FL 216	H 2316	8.1
UKFL 217	75	305	248	36	22	63	25	190	76	63	114	192	95	M22	UK 217	8,390	5,600	FL 217	H 2317	9.9
UKFL 218	80	320	265	40	23	68	25	205	82	65	122	205	102	M22	UK 218	9,600	6,450	FL 218	H 2318	12.2



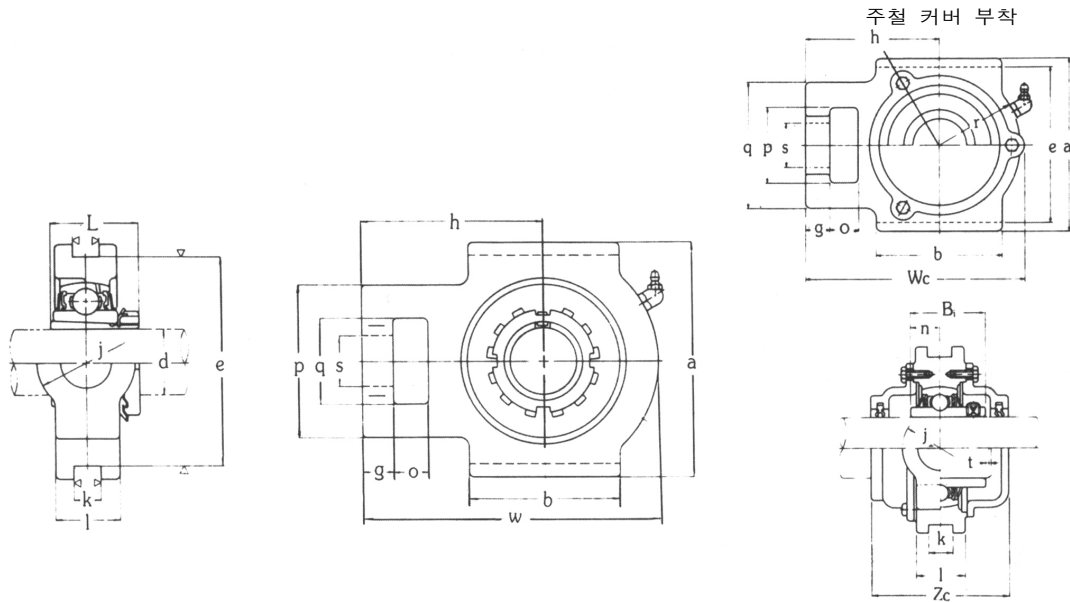
유니트 호칭번호	축지름	주요치수 (mm)												설치 볼트 호칭	베어링			하우징의 호칭번호	적용 어댑터	중량 (kgf)
	d														호칭번호	기본정격하중				
		(mm)	a	e	i	g	l	s	b	Z	L	Zc	bc			C	C(kgf)			
UKFL 305	20	150	113	16	13	29	19	80	37.5	35	56	86	40	M16	UK 305	2,100	1,090	FL 305	H 2305	1.1
UKFL 306	25	180	134	18	15	32	23	90	41	38	60	101	45	M20	UK 306	2,660	1,440	FL 306	H 2306	1.5
UKFL 307	30	185	141	20	16	36	23	100	45.5	43	68	110	50	M20	UK 307	3,330	1,840	FL 307	H 2307	1.9
UKFL 308	35	200	158	23	17	40	23	112	50.5	46	76	122	56	M20	UK 308	4,070	2,300	FL 308	H 2308	2.5
UKFL 309	40	230	177	25	18	44	25	125	55	50	80	135	62	M22	UK 309	4,890	2,950	FL 309	H 2309	3.6
UKFL 310	45	240	187	28	19	48	25	140	60	55	88	152	70	M22	UK 310	6,200	3,650	FL 310	H 2310	4.4
UKFL 311	50	250	198	30	20	52	25	150	63.5	59	92	162	75	M22	UK 311	7,160	4,300	FL 311	H 2311	5.6
UKFL 312	55	270	212	33	22	56	31	160	69.5	62	100	175	80	M27	UK 312	8,180	5,000	FL 312	H 2312	6.9
UKFL 313	60	295	240	33	25	58	31	175	71.5	65	103	189	88	M27	UK 313	9,270	5,750	FL 313	H 2313	8.6
UKFL 315	65	320	260	39	30	66	35	195	81.5	73	114	210	98	M30	UK 315	11,300	7,400	FL 315	H 2315	11.4
UKFL 316	70	355	285	38	32	68	38	210	82.5	78	116	222	105	M33	UK 316	12,300	8,250	FL 316	H 2316	13.9
UKFL 317	75	370	300	44	32	74	38	220	92	82	127	234	110	M33	UK 317	13,300	9,200	FL 317	H 2317	15.8
UKFL 318	80	385	315	44	36	76	38	235	92	86	129	247	118	M33	UK 318	14,300	10,200	FL 318	H 2318	19.1
UKFL 319	85	405	330	59	40	94	41	250	111	90	149	260	125	M36	UK 319	15,300	11,300	FL 319	H 2319	24.9
UKFL 320	90	440	360	59	40	94	44	270	113	97	154	280	135	M39	UK 320	17,300	13,500	FL 320	H 2320	29.0
UKFL 322	100	470	390	60	42	96	44	300	120	105	160	315	150	M39	UK 322	20,500	17,200	FL 322	H 2322	36.1
UKFL 324	110	520	430	65	48	110	47	330	130.5	112	172	342	165	M42	UK 324	20,700	17,400	FL 324	H 2324	51.9
UKFL 326	115	550	460	65	50	115	47	360	131.5	121	178	376	180	M42	UK 326	22,900	20,200	FL 326	H 2326	61.4
UKFL 328	125	600	500	75	60	125	51	400	147.5	131	192	410	200	M45	UK 328	25,300	23,200	FL 328	H 2328	68.4



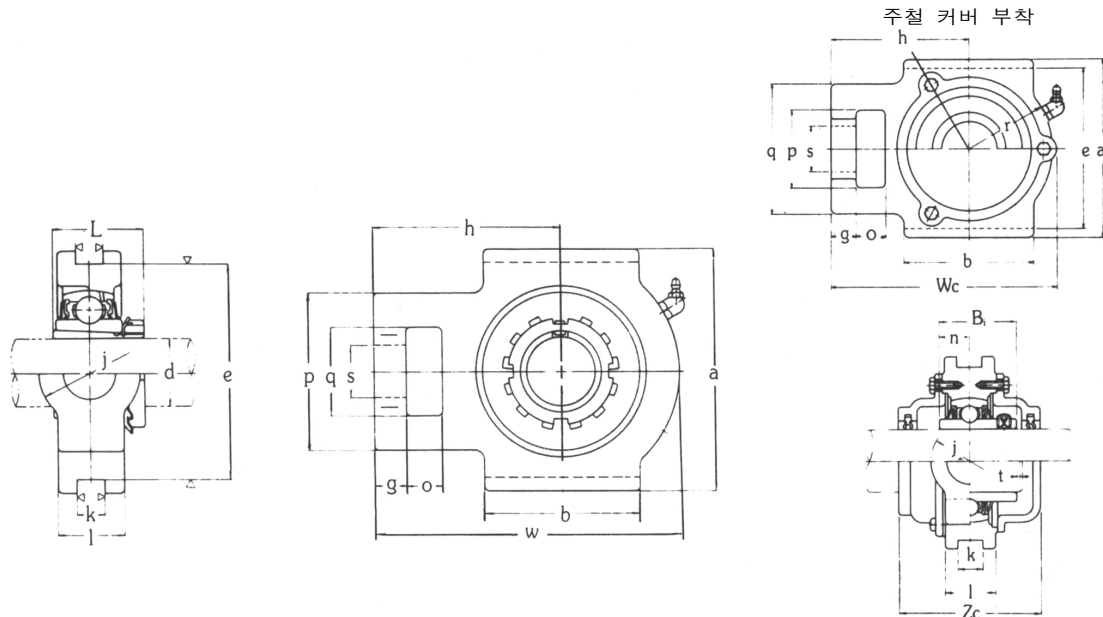
유 니 트 호칭번호	축지름		주 요 치 수 (mm)																베 어 링			하우징의 호칭번호	중량 (kgf)
	d	(mm)																	호칭번호		기본정격하중		
			C(kgf)	Co(kgf)																			
UCT 201	12	16	10	51	32	19	51	12	76	89	94	32	21	61	31	12.7	-	-	UC 201	1,280	650	T 204	0.81
UCT 202	15	16	10	51	32	19	51	12	76	89	94	32	21	61	31	12.7	-	-	UC 202	1,280	650	T 204	0.79
UCT 203	17	16	10	51	32	19	51	12	76	89	94	32	21	61	31	12.7	-	-	UC 203	1,280	650	T 204	0.78
UCT 204	20	16	10	51	32	19	51	12	76	89	94	32	21	61	31	12.7	97	62	UC 204	1,280	650	T 204	0.76
UCT 205	25	16	10	51	32	19	51	12	76	89	97	32	24	62	34	14.3	100.5	70	UC 205	1,400	730	T 205	0.84
UCT 206	30	16	10	56	37	22	57	12	89	102	113	37	28	70	38.1	15.9	113.5	75	UC 206	1,950	1,050	T 206	1.3
UCT 207	35	16	13	64	37	22	64	12	89	102	129	37	30	78	42.9	17.5	129	80	UC 207	2,570	1,430	T 207	1.6
UCT 208	40	19	16	83	49	29	83	16	102	114	144	49	33	88	49.2	19	144	90	UC 208	2,910	1,650	T 208	2.5
UCT 209	45	19	16	83	49	29	83	16	102	117	144	49	35	87	49.2	19	144.5	95	UC 209	3,200	1,850	T 209	2.4
UCT 210	50	19	16	83	49	29	86	16	102	117	149	49	37	90	51.6	19	150	100	UC 210	3,510	2,100	T 210	2.6
UCT 211	55	25	19	102	64	35	95	22	130	146	171	64	38	106	55.6	22.2	171.5	100	UC 211	4,330	2,660	T 211	4.0
UCT 212	60	32	19	102	64	35	102	22	130	146	194	64	42	119	65.1	25.4	194	115	UC 212	5,240	3,300	T 212	4.9
UCT 213	65	32	21	111	70	41	121	26	151	167	224	70	44	137	65.1	25.4	224	120	UC 213	5,720	3,650	T 213	6.9
UCT 214	70	32	21	111	70	41	121	26	151	167	224	70	46	137	74.6	30.2	224	135	UC 214	6,220	4,000	T 214	7.0
UCT 215	75	32	21	111	70	41	121	26	151	167	232	70	48	140	77.8	33.3	232	135	UC 215	6,740	4,400	T 215	7.3
UCT 216	80	32	21	111	70	41	121	26	165	184	235	70	51	140	82.6	33.3	235	145	UC 216	7,260	4,750	T 216	8.2
UCT 217	85	38	29	124	73	48	157	30	173	198	260	73	54	162	85.7	34.1	260	135	UC 217	8,390	5,600	T 217	11.0



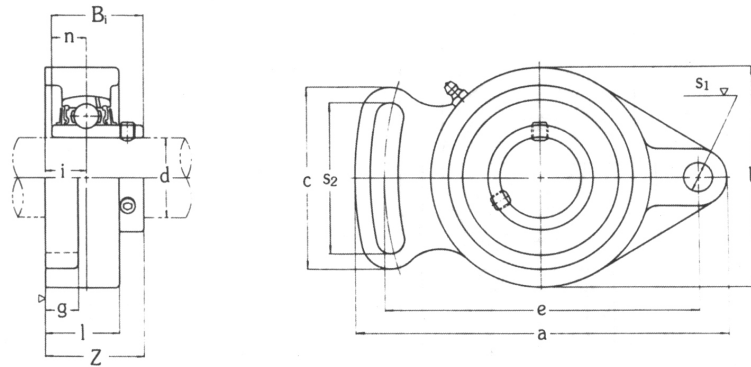
유 니 트 호칭번호	축지름	주 요 치 수 (mm)																	베 어 링			하우징의 호칭번호	중량 (kgf)
	d																		호칭번호		기본정격하중		
	(mm)	o	g	p	q	s	b	k	e	a	w	j	l	h	B ₁	n	Wc	Zc	C(kgf)	Co(kgf)			
UCT 305	25	16	12	62	36	26	65	12	80	89	122	36	26	76	38	15	122	80	UC 305	2,100	1,090	T 305	1.4
UCT 306	30	18	14	70	41	28	74	16	90	100	137	41	28	85	43	17	139	85	UC 306	2,660	1,440	T 306	1.8
UCT 307	35	20	15	75	45	30	80	16	100	111	150	45	32	94	48	19	152	95	UC 307	3,330	1,840	T 307	2.3
UCT 308	40	22	17	83	50	32	89	18	112	124	162	50	34	100	52	19	164	105	UC 308	4,070	2,300	T 308	3.0
	45	24	18	90	55	34	97	18	125	138	178	55	38	110	57	22	181	110	UC 309	4,890	2,950	T 309	4.1
	50	27	20	98	61	37	106	20	140	151	191	61	40	117	61	22	197	120	UC 310	6,200	3,650	T 310	4.9
UCT 311	55	29	21	105	66	39	115	22	150	163	207	66	44	127	66	25	211	125	UC 311	7,160	4,300	T 311	6.1
	60	31	23	113	71	41	123	22	160	178	220	71	46	135	71	26	227	135	UC 312	8,180	5,000	T 312	7.6
	65	32	25	116	70	43	134	26	170	190	238	80	50	146	75	30	244	140	UC 313	9,270	5,750	T 313	9.3
UCT 314	70	36	25	130	85	46	140	26	180	202	252	90	52	155	78	33	258	140	UC 314	10,400	6,550	T 314	11.1
	75	36	25	132	85	46	150	26	192	216	262	90	55	160	82	32	268	150	UC 315	11,300	7,400	T 315	13.0
	80	42	28	150	98	53	160	30	204	230	282	102	60	174	86	34	287	155	UC 316	12,300	8,250	T 316	16.2
UCT 317	85	42	30	152	98	53	170	32	214	240	298	102	64	183	96	40	303	170	UC 317	13,300	9,200	T 317	19.0
	90	46	30	160	106	57	175	32	228	255	312	110	66	192	96	40	317	170	UC 318	14,300	10,200	T 318	21.6
	95	46	31	165	106	57	180	35	240	270	322	110	72	197	103	41	327	180	UC 319	15,300	11,300	T 319	24.9
UCT 320	100	48	32	175	115	59	200	35	260	290	345	120	75	210	108	42	350	190	UC 320	17,300	13,500	T 320	30.7
	105	48	32	175	115	59	200	35	260	290	345	120	75	210	112	44	359	195	UC 321	18,400	14,700	T 321	36.7
	110	52	38	185	125	65	215	38	285	320	385	130	80	235	117	46	395	200	UC 322	20,500	17,200	T 322	39.7
UCT 324	120	60	42	210	140	70	230	45	320	355	432	140	90	267	126	51	439	215	UC 324	20,700	17,400	T 324	54.4
	130	65	45	220	150	75	240	50	350	385	465	150	100	285	135	54	476	225	UC 326	22,900	20,200	T 326	69.3
	140	70	50	230	160	80	255	50	380	415	515	155	100	315	145	59	519	235	UC 328	25,300	23,200	T 328	85.1



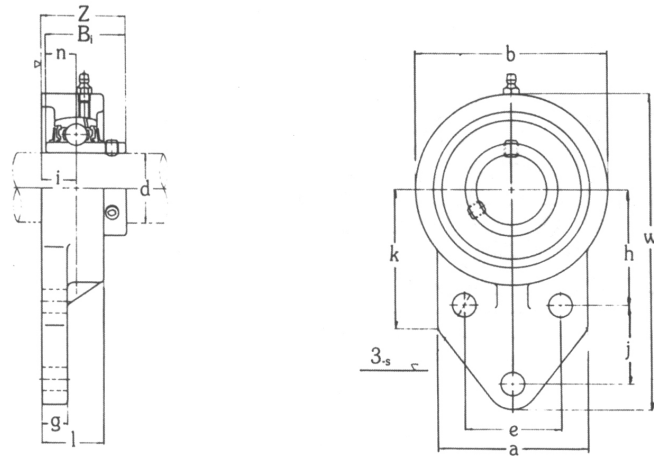
유 니 트 호칭번호	축지름		주 요 치 수 (mm)																베 어 링			하우징의 호칭번호	적 용 어댑터	중량 (kgf)
	d	(mm)																	호칭번호		기본정격하중			
			o	g	p	q	s	b	k	e	a	w	j	l	h	l	Wc	Zc	C(kgf)	Co(kgf)				
UKT 205	20	16	10	51	32	19	51	12	76	89	97	32	24	62	29	100.5	70	UK 205	1,400	730	T 205	H 2305	0.88	
UKT 206	25	16	10	56	37	22	57	12	89	102	113	37	28	70	31	113.5	75	UK 206	1,950	1,050	T 206	H 2306	1.3	
UKT 207	30	16	13	64	37	22	64	12	89	102	129	37	30	78	35	129	80	UK 207	2,570	1,430	T 207	H 2307	1.7	
UKT 208	35	19	16	83	49	29	83	16	102	114	144	49	33	88	36	144	90	UK 208	2,910	1,650	T 208	H 2308	2.5	
UKT 209	40	19	16	83	49	29	83	16	102	117	144	49	35	87	39	144.5	95	UK 209	3,200	1,850	T 209	H 2309	2.5	
UKT 210	45	19	16	83	49	29	86	16	102	117	149	49	37	90	42	150	100	UK 210	3,510	2,100	T 210	H 2310	2.7	
UKT 211	50	25	19	102	64	35	95	22	130	146	171	64	38	106	45	171.5	100	UK 211	4,330	2,660	T 211	H 2311	4.1	
UKT 212	55	32	19	102	64	35	102	22	130	146	194	64	42	119	47	194	115	UK 212	5,240	3,300	T 212	H 2312	4.1	
UKT 213	60	32	21	111	70	41	121	26	151	167	224	70	44	137	50	224	120	UK 213	5,720	3,650	T 213	H 2313	6.8	
UKT 215	65	32	21	111	70	41	121	26	151	167	232	70	48	140	55	232	135	UK 215	6,740	4,400	T 215	H 2315	7.4	
UKT 216	70	32	21	111	70	41	121	26	165	184	235	70	51	140	59	235	145	UK 216	7,260	4,750	T 216	H 2316	8.5	
UKT 217	75	38	29	124	73	48	157	30	173	198	260	73	54	162	63	260	155	UK 217	8,390	5,600	T 217	H 2317	11.2	



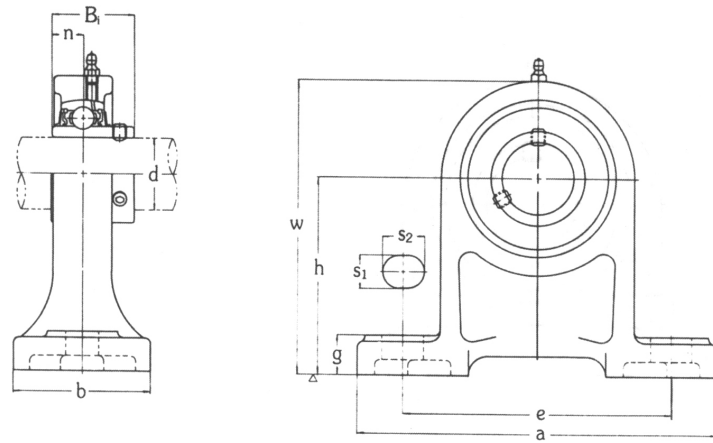
유 니 트 호칭번호	축지름	주 요 치 수 (mm)																베 어 링			하우징의 호칭번호	적 용 어댑터	중량 (kgf)	
	d																	호칭번호		기본정격하중				
	(mm)	o	g	p	q	s	b	k	e	a	w	j	l	h	L	Wc	Zc	C(kgf)	Co(kgf)					
	UKT 305	20	16	12	62	36	26	65	12	80	89	122	36	26	76	35	122	80	UK 305	2,100	1,090	T 305	H 2305	1.5
UKT 306	25	18	14	70	41	28	74	16	90	100	137	41	28	85	38	139	85	UK 306	2,660	1,440	T 306	H 2306	1.9	
UKT 307	30	20	15	75	45	30	80	16	100	111	150	45	32	94	43	152	95	UK 307	3,330	1,840	T 307	H 2307	2.4	
UKT 308	35	22	17	83	50	32	89	18	112	124	162	50	34	100	46	164	105	UK 308	4,070	2,300	T 308	H 2308	3.0	
	40	24	18	90	55	34	97	18	125	138	178	55	38	110	50	181	110	UK 309	4,890	2,950	T 309	H 2309	4.2	
	UKT 310	45	27	20	98	61	37	106	20	140	151	191	61	40	117	55	197	120	UK 310	6,200	3,650	T 310	H 2310	5.0
UKT 311	50	29	21	105	66	39	115	22	150	163	207	66	44	127	59	211	125	UK 311	7,160	4,300	T 311	H 2311	6.4	
	UKT 312	55	31	23	113	71	41	123	22	160	178	220	71	46	135	62	227	135	UK 312	8,180	5,000	T 312	H 2312	7.5
	UKT 313	60	32	25	116	70	43	134	26	170	190	238	80	50	146	65	244	140	UK 313	9,270	5,750	T 313	H 2313	9.4
UKT 315	65	36	25	132	85	46	150	26	192	216	262	90	55	160	73	268	150	UK 315	11,300	7,400	T 315	H 2315	13.1	
	UKT 316	70	42	28	150	98	53	160	30	204	230	282	102	60	174	78	287	155	UK 316	12,300	8,250	T 316	H 2316	16.3
UKT 317	75	42	30	152	98	53	170	32	214	240	298	102	64	183	82	303	170	UK 317	13,300	9,200	T 317	H 2317	18.9	
	UKT 318	80	46	30	160	106	57	175	32	228	255	312	110	66	192	86	317	170	UK 318	14,300	10,200	T 318	H 2318	21.7
	UKT 319	85	46	31	165	106	57	180	35	240	270	322	110	72	197	90	327	180	UK 319	15,300	11,300	T 319	H 2319	25.2
UKT 320	90	48	32	175	115	59	200	35	260	290	345	120	75	210	97	350	190	UK 320	17,300	13,500	T 320	H 2320	30.4	
UKT 322	100	52	38	185	125	65	215	38	285	320	385	130	80	235	105	395	200	UK 322	20,500	17,200	T 322	H 2322	39.5	
UKT 324	110	60	42	210	140	70	230	45	320	355	432	140	90	267	112	439	215	UK 324	20,700	17,400	T 324	H 2324	54.7	
	UKT 326	115	65	45	220	150	75	240	50	350	385	465	150	100	285	121	476	225	UK 326	22,900	20,200	T 326	H 2326	69.1
	UKT 328	125	70	50	230	160	80	255	50	380	415	515	155	100	315	131	519	235	UK 328	25,300	23,200	T 328	H 2328	85.1



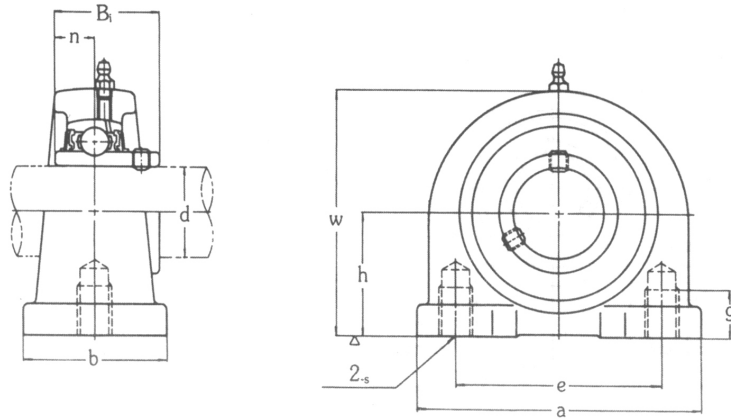
유 니 트 호칭번호	축지름		주 요 치 수 (mm)											설치 볼트 호칭	베 어 링			하우징의 호칭번호	중량 (kgf)	
	d	(mm)	a	e	i	g	l	s ₁	s ₂	b	Z	c	B ₁		n	호칭번호	기본정격하중			
																	C(kgf)			Co(kgf)
UCFA 201	12	98	78	13.8	11	24	10	40	59	32.1	50	31	12.7	M 8	UC 201	1,280	650	FA 204	0.47	
UCFA 202	15	98	78	13.8	11	24	10	40	59	32.1	50	31	12.7	M 8	UC 202	1,280	650	FA 204	0.45	
UCFA 203	17	98	78	13.8	11	24	10	40	59	32.1	50	31	12.7	M 8	UC 203	1,280	650	FA 204	0.44	
UCFA 204	20	98	78	13.8	11	24	10	40	59	32.1	50	31	12.7	M 8	UC 204	1,280	650	FA 204	0.42	
UCFA 205	25	124	98	16	13	27	11	49	70	35.7	64	34	14.3	M10	UC 205	1,400	730	FA 205	0.68	
UCFA 206	30	141	117	17.8	13	30	11	56	83	40	68	38.1	15.9	M10	UC 206	1,950	1,050	FA 206	1.0	
UCFA 207	35	155	130	18.6	14	34	13	63	96	44	75	42.9	17.5	M12	UC 207	2,570	1,430	FA 207	1.5	
UCFA 208	40	171	144	20.8	14	38	13	70	105	51	84	49.2	19	M12	UC 208	2,910	1,650	FA 208	1.9	
UCFA 209	45	179	148	21.8	14	40	15	72	111	52	88	49.2	19	M14	UC 209	3,200	1,850	FA 209	1.7	
UCFA 210	50	189	157	22.5	14	40	15	75	116	55.1	92	51.6	19	M14	UC 210	3,510	2,100	FA 210	2.0	
UCFA 211	55	216	184	25.7	20	44	16	86	133	59.1	102	55.6	22.2	M14	UC 211	4,330	2,660	FA 211	3.6	



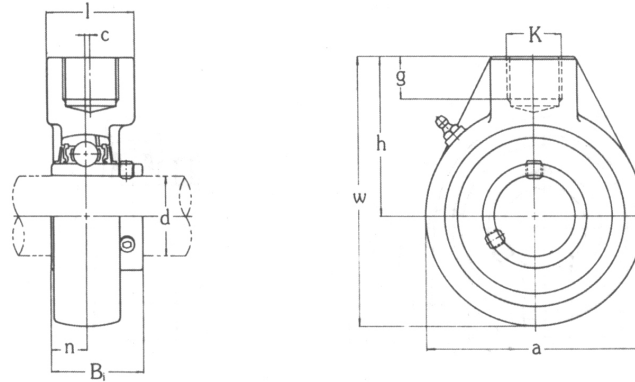
유 니 트 호칭번호	축지름		주 요 치 수 (mm)														설치 볼트 호칭	베 어 링			하우징의 호칭번호	중량 (kgf)
	d																	호칭번호	기본정격하중			
		(mm)	w	b	a	l	s	g	h	j	e	k	i	Z	B ₁	n			C(kgf)	Co(kgf)		
UCFB 201	12	110	62	52	24	9.5	13	42	27	32	52	13.5	31.8	31	12.7	M 8	UC 201	1,280	650	FB 204	0.64	
UCFB 202	15	110	62	52	24	9.5	13	42	27	32	52	13.5	31.8	31	12.7	M 8	UC 202	1,280	650	FB 204	0.62	
UCFB 203	17	110	62	52	24	9.5	13	42	27	32	52	13.5	31.8	31	12.7	M 8	UC 203	1,280	650	FB 204	0.61	
UCFB 204	20	110	62	52	24	9.5	13	42	27	32	52	13.5	31.8	31	12.7	M 8	UC 204	1,280	650	FB 204	0.59	
UCFB 205	25	116	68	56	26	9.5	13	45	27	34	52	15	34.7	34	14.3	M 8	UC 205	1,400	730	FB 205	0.68	
UCFB 206	30	130	78	65	29	9.5	13	50	29	40	55	17	39.2	38.1	15.9	M 8	UC 206	1,950	1,050	FB 206	0.92	
UCFB 207	35	144	90	70	33	9.5	15	55	32	46	62	19	44.4	42.9	17.5	M 8	UC 207	2,570	1,430	FB 207	1.3	
UCFB 208	40	164	100	78	34	11.1	16	60	41	50	72	20	50.2	49.2	19	M10	UC 208	2,910	1,650	FB 208	1.8	
UCFB 209	45	174	106	80	34	11.1	18	65	43	54	76	20	50.2	49.2	19	M10	UC 209	3,200	1,850	FB 209	2.0	
UCFB 210	50	184	112	86	35	11.1	18	68	46	58	82	20	52.6	51.6	19	M10	UC 210	3,510	2,100	FB 210	2.3	



유 니 트 호칭번호	축지름	주 요 치 수 (mm)										설치 볼트 호칭	베 어 링			하우징의 호칭번호	중량 (kgf)
	d												호칭번호	기본정격하중			
	(mm)	h	a	e	b	s ₁	s ₂	g	w	B ₁	n			C(kgf)	Co(kgf)		
UCPH 201	12	70	127	95	40	13	19	15	101	31	12.7	M10	UC 201	1,280	650	PH 204	0.96
UCPH 202	15	70	127	95	40	13	19	15	101	31	12.7	M10	UC 202	1,280	650	PH 204	0.94
UCPH 203	17	70	127	95	40	13	19	15	101	31	12.7	M10	UC 203	1,280	650	PH 204	0.93
UCPH 204	20	70	127	95	40	13	19	15	101	31	12.7	M10	UC 204	1,280	650	PH 204	0.91
UCPH 205	25	80	140	105	50	13	19	16	114	34	14.3	M10	UC 205	1,400	730	PH 205	1.2
UCPH 206	30	90	165	121	50	17	21	18	130	38.1	15.9	M14	UC 206	1,950	1,050	PH 206	1.6
UCPH 207	35	95	167	127	60	17	21	18	140	42.9	17.5	M14	UC 207	2,570	1,430	PH 207	2.0
UCPH 208	40	100	184	137	70	17	21	20	150	49.2	19	M14	UC 208	2,910	1,650	PH 208	2.7
UCPH 209	45	105	190	146	70	17	21	20	158	49.2	19	M14	UC 209	3,200	1,850	PH 209	3.0
UCPH 210	50	110	206	159	70	20	22	22	165	51.6	19	M16	UC 210	3,510	2,100	PH 210	3.5



유 니 트 호칭번호	축지름	주 요 치 수 (mm)									베 어 링			하우징의 호칭번호	중량 (kgf)
	d										호칭번호	기본정격하중			
	(mm)	h	a	e	b	s	w	g	B ₁	n		C(kgf)	Co(kgf)		
UCPA 201	12	30.2	76	52	40	M10×1.5	62	13	31	12.7	UC 201	1,280	650	PA 204	0.64
UCPA 202	15	30.2	76	52	40	M10×1.5	62	13	31	12.7	UC 202	1,280	650	PA 204	0.62
UCPA 203	17	30.2	76	52	40	M10×1.5	62	13	31	12.7	UC 203	1,280	650	PA 204	0.61
UCPA 204	20	30.2	76	52	40	M10×1.5	62	13	31	12.7	UC 204	1,280	650	PA 204	0.59
UCPA 205	25	36.5	84	56	45	M10×1.5	72	13	34	14.3	UC 205	1,400	730	PA 205	0.83
UCPA 206	30	42.9	94	66	50	M14×2	84	18	38.1	15.9	UC 206	1,950	1,050	PA 206	1.2
UCPA 207	35	47.6	110	80	55	M14×2	95	20	42.9	17.5	UC 207	2,570	1,430	PA 207	1.7
UCPA 208	40	49.2	116	84	58	M14×2	100	20	49.2	19	UC 208	2,910	1,650	PA 208	2.0
UCPA 209	45	54.2	120	90	60	M14×2	108	25	49.2	19	UC 209	3,200	1,850	PA 209	2.2
UCPA 210	50	57.2	130	94	64	M16×2	116	25	51.6	19	UC 210	3,510	2,100	PA 210	2.8



유 니 트 호칭번호	축지름	주 요 치 수 (mm)									베 어 링			하우징의 호칭번호	중량 (kgf)
	d										호칭번호	기본정격하중			
	(mm)	a	w	c	h	l	g	k(in)	B ₁	n		C(kgf)	Co(kgf)		
UCHA 201	12	64	96	0	64	40	19	PF 3/4	31	12.7	UC 201	1,280	650	HA 204	0.77
UCHA 202	15	64	96	0	64	40	19	PF 3/4	31	12.7	UC 202	1,280	650	HA 204	0.75
UCHA 203	17	64	96	0	64	40	19	PF 3/4	31	12.7	UC 203	1,280	650	HA 204	0.74
UCHA 204	20	64	96	0	64	40	19	PF 3/4	31	12.7	UC 204	1,280	650	HA 204	0.72
UCHA 205	25	78	103	0	64	40	19	PF 3/4	34	14.3	UC 205	1,400	730	HA 205	0.87
UCHA 206	30	78	103	0	64	40	19	PF 3/4	38.1	15.9	UC 206	1,950	1,050	HA 206	0.83
UCHA 207	35	92	116	0	70	40	19	PF 3/4	42.9	17.5	UC 207	2,570	1,430	HA 207	1.2
UCHA 208	40	96	121	2	73	40	19	PF 3/4	49.2	19	UC 208	2,910	1,650	HA 208	1.3
UCHA 209	45	108	136	5	82	48	21	PF 1	49.2	19	UC 209	3,200	1,850	HA 209	1.7
UCHA 210	50	118	142	5	83	48	21	PF 1	51.6	19	UC 210	3,510	2,100	HA 210	2.1
UCHA 211	55	126	150	7	87	60	25	PF 11/4	55.6	22.2	UC 211	4,330	2,660	HA 211	2.8
UCHA 212	60	142	173	8	102	60	28	PF 11/4	65.1	25.4	UC 212	5,240	3,300	HA 212	3.9
UCHA 213	65	166	200	9.5	117	70	32	PF 11/2	65.1	25.4	UC 213	5,720	3,650	HA 213	5.8
UCHA 214	70	166	200	9.5	117	70	32	PF 11/2	74.6	30.2	UC 214	6,220	4,000	HA 214	5.9
UCHA 215	75	166	200	9.5	117	70	32	PF 11/2	77.8	33.3	UC 215	6,740	4,400	HA 215	5.6